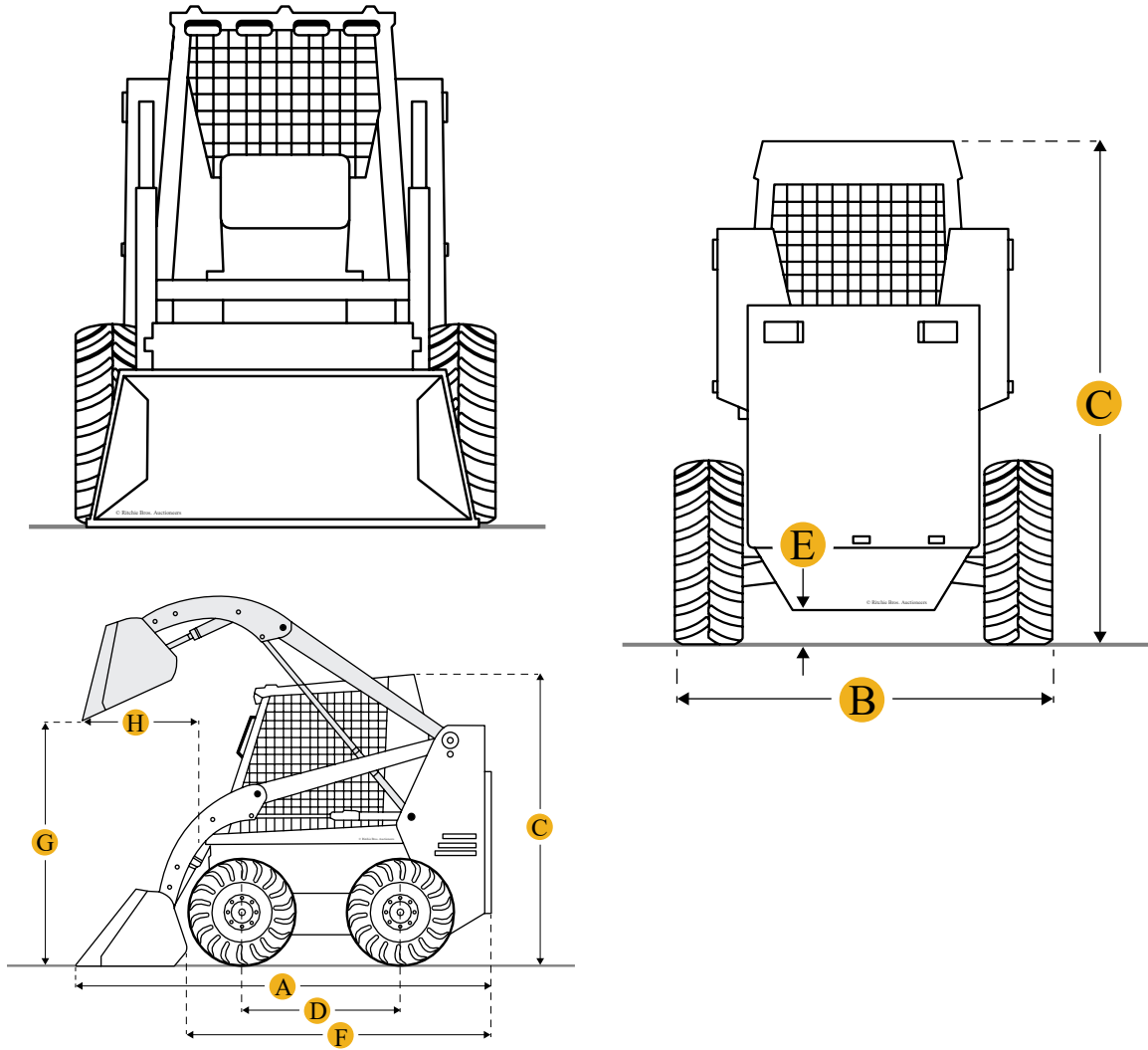


### Caterpillar 236B Series 2 Skid Steer Loader



Dimensions

## Dimensions

A	<b>Length with Bucket</b>	11.5 ft in
B	<b>Width Over Tires</b>	5.5 ft in
C	<b>Height to Top of Cab</b>	6.83 ft in
D	<b>Wheelbase</b>	3.75 ft in
E	<b>Ground Clearance</b>	9.31 in
F	<b>Length w/o Bucket</b>	9.17 ft in
G	<b>Clearance at Max Lift and Dump</b>	7.83 ft in
H	<b>Reach at Max Lift and Dump</b>	21 in

---

## Specifications

## Engine

<b>Number of Cylinders</b>	4
<b>Engine Make</b>	2236
<b>Engine Model</b>	3044C DIT
<b>Gross Power</b>	75 hp
<b>Net Power</b>	70 hp
<b>Power Measured @</b>	2600 rpm
<b>Displacement</b>	201 cu in
<b>Bore</b>	3.7 in
<b>Stroke</b>	4.7 in
<b>Gross Power - SAE J1995</b>	75 hp
<b>Engine Model</b>	Cat C3.4 DIT
<b>Net Power - SAE 1349</b>	71 hp
<b>Net Flywheel Power</b>	71 hp

## Operational

<b>Operational Weight</b>	7007 lb
<b>Fuel Capacity</b>	23.8 gal
<b>Cooling System Fluid Capacity</b>	2.6 gal
<b>Engine Oil Fluid Capacity</b>	2.6 gal
<b>Hydraulic System Fluid Capacity</b>	13.7 gal
<b>Chain Box Fluid Capacity - each side</b>	1.8 gal
<b>Max Speed</b>	7.5 mph
<b>Operating Voltage</b>	12 V
<b>Alternator Supplied Amperage</b>	90 amps
Power Train	
<b>Travel Speed Forward</b>	7.6 mph
<b>Travel Speed Reverse</b>	7.6 mph
<b>Travel Speed Reverse - 2-Speed Option</b>	11.6 mph
<b>Travel Speed Forward - 2-Speed Option</b>	11.6 mph
Weights	
<b>Operating Weight</b>	7007 lb
Loader	
<b>Breakout Force</b>	5484
<b>Operating Load Rating</b>	1950 lb
<b>Tipping Angle</b>	4000 degrees
<b>Bucket Capacity</b>	0.5 yd <sup>3</sup>
Hydraulic System	
<b>Hydraulic Power</b>	42.8 hp
<b>Loader Hydraulic Pressure</b>	3335 psi
<b>Loader Hydraulic Flow</b>	22 gal/min

<b>Hydraulic Flow</b>	Standard
Hydraulic	
<b>Pump Flow Capacity</b>	22 gal/min
<b>Relief Valve Pressure</b>	3335 psi
Dimensions	
<b>Length with Bucket</b>	11.5 ft in
<b>Length w/o Bucket</b>	9.2 ft in
<b>Width Over Tires</b>	5.5 ft in
<b>Height to Top of Cab</b>	6.9 ft in
<b>Clearance at Max Lift and Dump</b>	7.9 ft in
<b>Wheelbase</b>	3.8 ft in
<b>Ground Clearance</b>	9.3 in
<b>Reach at Max Lift and Dump</b>	21 in
<b>Turning Radius from Center - machine rear</b>	64 in
<b>Turning Radius from Center - inc bucket</b>	83 in
<b>Wheel Base</b>	3.8 ft in
<b>Bucket Pin Height - Maximum Lift</b>	10.2 ft in
<b>Height - Top of Cab</b>	6.9 ft in
<b>Length - Without Bucket</b>	110 in
<b>Length - With Bucket on Ground</b>	138 in
<b>Maximum Overall Height</b>	156 in
<b>Bucket Pin Height - Carry Position</b>	10 in
<b>Clearance at Maximum Lift and Dump</b>	94 in
<b>Departure Angle</b>	28 degrees
<b>Maximum Dump Angle</b>	40 degrees
<b>Rack Back Angle - Maximum Height</b>	97.4 degrees

**Turn Radius from Center - Rear** 64 in

**Turn Radius from Center - Coupler** 52 in

**Turn Radius from Center - Bucket** 83 in

**Maximum Reach - With Arms Parallel** 53 in

**Reach - Maximum Lift/Dump** 21 in

**Vehicle Width over Tires** 66 in

**Bumper Overhang - Rear Axle** 41 in

#### Operating Specifications

**Rated Operating Capacity with Optional Counterweight** 2050 lb

**Tipping Load** 3900 lb

**Breakout Force - Tilt Cylinder** 5484 lb

**Rated Operating Capacity** 1950 lb

#### Service Refill Capacities

**Cooling System** 2.6 gal

**Fuel Tank** 23.8 gal

**Hydraulic Tank** 9.2 gal

**Engine Crankcase** 2.4 gal

**Hydraulic System** 13.7 gal

**Chain Box - Each Side** 1.8 gal

#### Cab

**ROPS** SAE J1040 MAY94, ISO 3471:1994

**FOPS** SAE J1043 SEPT87, ISO 3449:1992  
Level I

**FOPS Level II** SAE J231 JAN81, ISO 3449:1992  
Level II