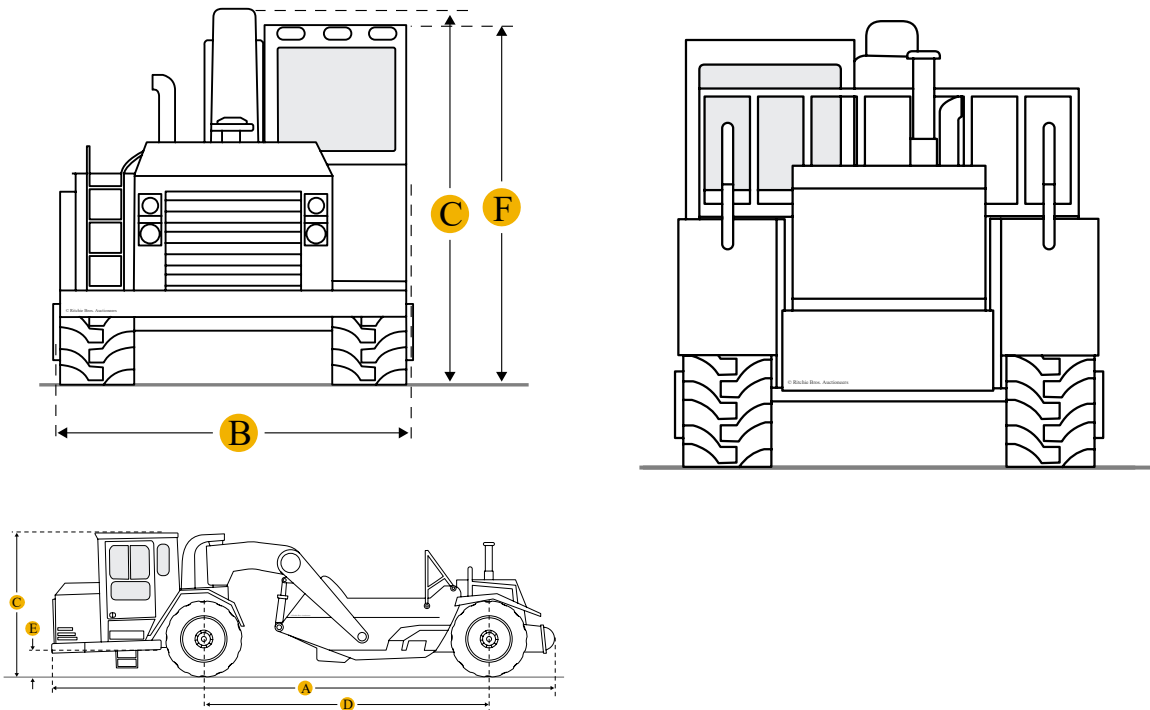


Caterpillar 613C Series II Motor Scraper



Dimensions

Dimensions

A	Overall Length	32.81 ft in
B	Overall Width	8.01 ft in
C	Overall Height	10.18 ft in
D	Wheelbase	20.54 ft in
F	Height to Top of Cab	9.59 ft in

Specifications

Engine

Net Power	175 hp
Displacement	403 cu in
Bore	4.2 in
Stroke	5 in
Tractor Engine	Cat 3116
Gross Power - Gears 1-2	187 hp
Net Power - Gears 1-2	175 hp
Net Power - Gears 3-8	175 hp
Flywheel Power - Tractor/Scraper	131 kW (175 hp)

Tractor Engine

Make	Caterpillar
Model	CAT 3116
Gross Power	187 hp
Net Power	175 hp
Displacement	403 cu in

Scraper Engine

Displacement	402.8 cu in
---------------------	-------------

Operational

Fuel Capacity	66.1 gal
Cooling System Fluid Capacity	10.2 gal
Engine Oil Fluid Capacity	5.3 gal
Transmission Fluid Capacity	9.3 gal
Differential Fluid Capacity	5.1 gal

Hydraulic System Fluid Capacity	26.5 gal
Wheel Coolant Fluid Capacity - each	1.6 gal
Tire Size	23.5R25
Transmission	
Number of Forward Gears	6
Number of Reverse Gears	1
Max Speed Forward	21.9 mph
Max Speed Reverse	2.2 mph
Reverse	2.17 mile/h
1 Forward	2.2 mph
2 Forward	3.6 mph
3 Forward	5.7 mph
4 Forward	8.9 mph
5 Forward	15.1 mph
6 Forward	21.8 mph
Top Speed - Loaded	21.8 mph
Weights	
Total Operating - empty	33651.4 lb
Front Axle - empty	21100.5 %
Rear Axle - empty	12551 %
Total Operating - Loaded	60050 lb
Front Axel - loaded	29438.4 lb
Rear Axle - loaded	30613.4 %
Total Operating - Empty	33650 lb
Front Axle	21100 lb
Rear Axle	12550 lb

Front Axle Weight - Loaded	29438 lb
Rear Axle - Weight - Loaded	30612 lb
Bowl	
Rated Payload	26400.4 lb
Struck Capacity	8.9 yd ³
Max Depth of Cut	14.6 in
Width of Cut	7.8 ft in
Elevator	
Number of Flights	15
Width - Flight Face	6.9 in
Length - Flights	66.1 in
Spacing of Flights	16 in
Length - Overall	96 in
Dimensions	
Overall Length	32.9 ft in
Overall Width	8.1 ft in
Height to Top of Cab	9.6 ft in
Overall Height	10.2 ft in
Wheelbase	20.6 ft in
Wheel Base	20.6 ft in
Height - Top of Cab	10.2 ft in
Width - Rear Tire Center Lines	70.9 in
Length - Overall Machine	399 in
Width - Outside Rear Tires	96 in
Height - Overall Shipping	122 in
Width - Overall Machine	96 in

Front of Tractor to Front Axle	98.4 in
Height - Scraper Blade Maximum	22.5 in
Rear Axle - Rear of Machine	48.4 in
Service Refill Capacities	
Cooling System	10.2 gal
Fuel Tank	66 gal
Crankcase	5.3 gal
Final Drive - Each	1.5 gal
Transmission	9.2 gal
Differential	5 gal
Hydraulic Reservoir	26.4 gal
Hydraulics	
Bowl Cylinder Bore	4 in
Bowl Cylinder Stroke	16.5 in
Steering Circuit	21.93 gal/min
Scraper Circuit	26.95 gal/min
Ejector Cylinder Bore	3.5 in
Ejector Cylinder Stroke	36 in
Scraper Bowl	
Width - Cut - To Router Bits	7.8 in
Rated Load	26400 lb
Capacity - Struck	8.9 yd ³
Depth of Cut - Maximum	6.3 in
Ground Clearance - Maximum	17.7 in
Depth of Spread - Maximum	14.6 in
Scraper Capacity - Heaped	