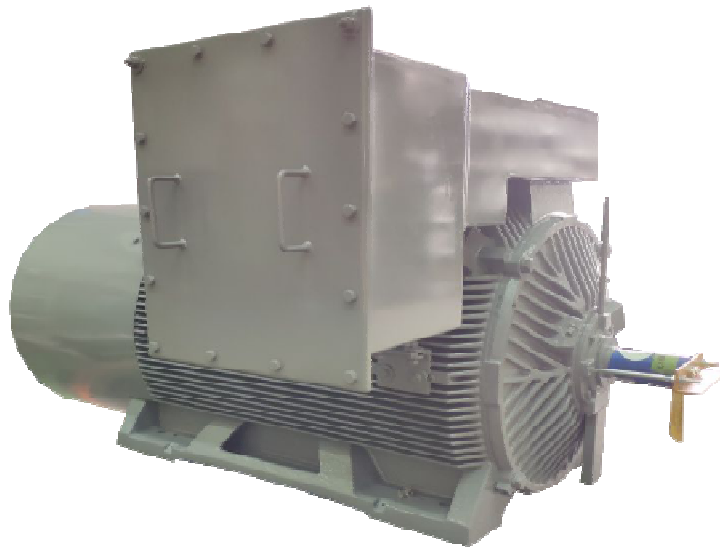


高壓 **Class I/II Division 2** 防爆馬達 (NEMA)

MODEL : AFHP

STANDARD 3-PHASE PREMIUM EFFICIENCY INDUCTION MOTORS
MEDIUM VOLTAGE SQUIRREL CAGE
FRAME SIZE (EG) 5009A~6812B



DWG NO.

3A057M287E

REV. 06

		SPECIFICATION TABLE	MODEL
		3-PHASE PREMIUM EFFICIENCY INDUCTION MOTORS MEDIUM VOLTAGE SQUIRREL CAGE	AFHP
ITEM		STANDARD SPECIFICATION	
RATING	KIND OF MOTOR	SQUIRREL-CAGE INDUCTION MOTOR (SCIM), F3 FRAME	
	DESIGN STANDARD	NEMA MG-1	
	VOLTAGE	2300V,2300V/4000V,4160V	
	FREQUENCY	60HZ (RATED SINUSOIDAL OR PWM POWER SOURCE)	
	OUTPUT RANGE	200 ~ 2000HP	
	R.P.M. (SYN.)	3600 ~ 900R.P.M. (2 ~ 8 POLE) 60HZ	
	TIME DUTY	SINEWAVE : CONTINUOUS S.F. 1.15 (S1, MCR) VFD : CONTINUOUS S.F. 1.0 (S1, MCR)	
	FRAME SIZE (EG)	5009A~6812B	
	PROTECTION ENCLOSURE	TOTALLY ENCLOSED (IP 55)	
	COOLING METHOD	SELF EXTERNAL FAN, SURFACE COOLING (IC 411)	
	MOUNTING	HORIZONTAL FOOT MOUNTING (IM1001, B3, F-1)	
APPLICATION	POWER CONDITIONS	VOLTAGE : ±10%, FREQUENCY ±5%, AND 10% MAX. OF COMBINED VOLTAGE AND FREQUENCY BUT FREQUENCY VARIATION DOES NOT EXCEED ±5%	
	ENVIRONMENT CONDITIONS	PLACE : SHADOW, NON-HAZARDOUS CSA CLASS I DIV.2,GROUP A,B,C & D(OPTION) CSA CLASS II DIV.2,GROUP F & G (OPTION) AMBIENT TEMPERATURE : -20 ~ 40°C(40°C max. or 55°C @ S.F. 1.0 Sinusoidal) RELATIVE HUMIDITY : LESS THAN 95% RH (NON-CONDENSATION) ALTITUDE : LESS THAN 3,300 FT	
	DRIVE METHOD	DIRECT COUPLING, SUITABLE FOR FLUID DUTY ONLY	
	DIRECTION OF ROTATION	BI-DIRECTIONAL, EXCEPT 2 POLE WHICH IS CLOCK-WISE FACING THE OPPOSITE DRIVE END	
	METHOD OF STARTING	FULL VOLTAGE ACROSS-THE-LINE OR REDUCED VOLTAGE STARTING OR VFD	
	TEST PROCEDURE	IEEE-112 METHOD B, AND FULL VOLTAGE MEASURING STARTING PERFORMANCE FOR MOTORS NOT OVER 300HP, IEEE-112 METHOD E · F AND REDUCED VOLTAGE MEASURING STARTING PERFORMANCE FOR THE OTHERS	
PERFORMANCE	TYPICAL PERFORMANCE	AS DWG NO. 3A057M290E, 3A057M315E	
	TEMPERATURE RISE	NOT TO EXCEED 105°C RISE BY RESISTANCE METHOD AT S.F. 1.15; 80°C RISE AT S.F. 1.0. ; (SUITABLE FOR SINUSOILDAL POWER)	
	OVER SPEED	201HP AND LARGER: 120% SYN. RPM FOR TWO MINUTES (2P); 125% SYN. RPM FOR TWO MINUTES (4P AND SLOWER) 201HP AND SMALLER: 125% SYN. RPM FOR TWO MINUTES (2& 4P); 150% SYN. RPM FOR TWO MINUTES (6& 8P)	
	SPEED RANGE	VARIABLE TORQUE : 10 : 1 · CONSTANT TORQUE : 3 : 1 EXCEPT 6P-1750HP AND 8P-1500HP	
	OVER TORQUE	160% RATED TORQUE FOR 15 SEC	
	NOISE	SOUND PRESSURE LEVEL MEASURED AT 1 METER DISTANCE & NO-LOAD CONDITION PER IEEE 85 METHOD (TOLERANCE ±3dBA). BELOW 88dBA FOR F#68XX-4P MACHINES. BELOW 85dBA FOR THE OTHER MACHINES.	

PERFORMANCE DATA																MODEL AFHP	
3-PHASE PREMIUM EFFICIENCY INDUCTION MOTORS MEDIUM VOLTAGE SQUIRREL CAGE																2300V 60Hz	

TEFC, 2P 2300V 60HZ

OUTPUT HP	FULL LOAD RPM	FRAME NO. (EG)	EFFICIENCY				POWER FACTOR			CURRENT			TORQUE		Safe Stall Time(s)		ROTOR WR ² LB-FT ²	Max. Load WR ² LB-FT ²	APPROX. WEIGHT LBS
			NOM.	MIN.	3/4	1/2	FULL	3/4	1/2	Rated	Starting	Starting	Starting	Max.	HOT	COLD			
			%	%	%	%	%	%	%	A	%	A	%	%	SEC	SEC			
250	3578	5009A	95.0	94.1	94.8	94.2	85.0	81.8	73.6	58	682	395	80	210	20	26	45	213	3220
300	3580	5009A	95.0	94.1	94.8	94.2	86.9	84.3	76.7	68	697	474	80	210	20	26	56	237	3440
350	3578	5009A	95.0	94.1	94.9	94.3	89.1	87.7	82.6	77	715	554	85	210	21	26	67	284	3660
400	3580	5011A	95.0	94.1	94.9	94.4	89.5	87.8	82.5	88	718	633	85	210	23	28	78	308	4150
450	3581	5011A	95.0	94.1	94.9	94.4	89.6	87.7	82.0	99	719	712	85	210	25	31	89	355	4390
500	3580	5011A	95.0	94.1	94.9	94.4	90.5	89.9	86.7	109	726	791	85	200	21	26	97	379	4540
600	3576	5011A※	95.4	94.5	95.1	94.2	88.1	86.4	80.8	134	710	949	85	200	28	32	103	450	4770
700	3583	5810A※	95.4	94.5	95.2	94.5	88.7	88.2	84.8	155	715	1107	100	210	20	30	155	497	6100
800	3584	5810A※	95.6	94.8	95.4	94.8	89.1	88.6	85.2	176	719	1265	100	210	20	30	177	568	6400
900	3583	5810A※	95.6	94.8	95.4	94.9	88.4	87.7	83.8	200	713	1423	100	210	28	39	177	616	6500

NOTE :

1. Test standard : IEEE-112.
2. Tolerance : NEMA MG1.
3. Number of consec. starts : 2 Cold 1 Hot.
4. Data presented in rating lists are typical values. Guaranteed values on request.
Legally binding performance and specification data is given to the end user once each order is confirmed.
5. This performance data is only for sinepower, not suitable for PWM power source.
6. The voltage and frequency combinations not included in performance data are quoted case by case.
7. With "※" : COPPER ROTOR
8. Without "※" : ALUMINUM ROTOR

TEFC, 4P 2300V 60HZ

OUTPUT HP	FULL LOAD RPM	FRAME NO. (EG)	EFFICIENCY				POWER FACTOR			CURRENT			TORQUE		Safe Stall Time(s)		ROTOR WR ² LB-FT ²	Max. Load WR ² LB-FT ²	APPROX. WEIGHT LBS
			NOM.	MIN.	3/4	1/2	FULL	3/4	1/2	Rated	Starting	Starting	Starting	Max.	HOT SEC	COLD SEC			
			%	%	%	%	%	%	%	A	%	A	%	%					
250	1781	5009B	95.0	94.1	94.9	94.1	86.6	84.3	77.5	57	694	395	90	200	22	27	113	1364	3450
300	1781	5009B	95.0	94.1	94.9	94.1	87.1	85.5	79.6	68	699	474	90	200	23	26	127	1620	3580
350	1786	5009B	95.0	94.1	94.9	94.1	85.1	82.1	73.8	81	683	554	90	200	22	29	141	1854	3700
400	1786	5011B	95.0	94.1	94.9	94.3	86.7	84.0	76.5	91	696	633	90	200	21	27	155	2089	3840
450	1784	5011B	95.0	94.1	94.9	94.3	87.9	86.3	80.6	101	706	712	90	200	22	27	168	2302	4210
500	1784	5011B	95.0	94.1	94.9	94.4	88.0	86.3	80.5	112	706	791	90	200	29	35	185	2536	4380
600	1785	5011B	95.4	94.5	95.3	94.8	88.3	86.5	80.6	133	711	949	100	200	22	28	220	2962	4690
700	1786	5810B※	95.4	94.5	95.3	94.8	85.9	84.4	78.7	160	692	1107	100	200	25	35	229	3389	6500
800	1787	5810B※	95.6	94.8	95.6	95.1	85.8	83.7	77.1	183	693	1265	100	200	21	29	262	3794	6800
900	1787	5810B※	95.6	94.8	95.6	95.1	86.0	84.1	77.9	205	694	1423	110	210	22	28	281	4177	6800
1000	1787	5810B※	95.6	94.8	95.5	95.1	85.7	83.8	77.4	229	692	1581	100	210	24	28	299	4561	7000
1000	1790	6808B※	95.8	95.0	95.4	94.1	84.0	80.9	72.5	233	680	1581	100	210	26	36	556	4061	#REF!
1250	1790	6808B※	96.0	95.2	95.6	94.5	84.0	81.0	72.6	290	681	1977	100	210	27	36	734	4878	#REF!
1500	1790	6812B※	96.1	95.4	95.7	94.8	85.1	82.4	74.8	343	691	2372	100	220	30	34	954	5174	#REF!
1750	1791	6812B※	96.3	95.6	96.0	95.1	84.8	81.7	73.5	401	690	2768	110	230	23	26	1095	5831	#REF!
2000	1791	6812B※	96.5	95.8	96.2	95.3	84.1	80.6	71.4	461	685	3163	110	230	28	34	1189	6453	#REF!

NOTE :

1. Test standard : IEEE-112.
2. Tolerance : NEMA MG1.
3. Number of consec. starts : 2 Cold 1 Hot.
4. Data presented in rating lists are typical values. Guaranteed values on request.
Legally binding performance and specification data is given to the end user once each order is confirmed.
5. This performance data is only for sinepower, not suitable for PWM power source.
6. The voltage and frequency combinations not included in performance data are quoted case by case.
7. With "※" : COPPER ROTOR
8. Without "※" : ALUMINUM ROTOR

TEFC, 6P 2300V 60HZ

OUTPUT HP	FULL LOAD RPM	FRAME NO. (EG)	EFFICIENCY				POWER FACTOR			CURRENT			TORQUE		Safe Stall Time(s)		ROTOR WR ² LB-FT ²	Max. Load WR ² LB-FT ²	APPROX. WEIGHT LBS
			NOM.	MIN.	3/4	1/2	FULL	3/4	1/2	Rated	Starting	Starting	Starting	Max.	HOT SEC	COLD SEC			
			%	%	%	%	%	%	%	A	%	A	%	%					
200	1187	5009B	95.0	94.1	94.8	94.2	75.6	69.7	57.3	52	606	316	100	210	20	26	104	4028	3350
250	1187	5009B	95.0	94.1	94.9	94.4	77.0	71.6	59.8	64	618	395	100	210	21	26	128	4923	3560
300	1186	5009B	95.0	94.1	94.9	94.5	78.6	74.0	63.4	75	631	474	100	210	22	27	153	5818	3790
350	1185	5009B	95.5	94.6	94.9	94.5	80.6	77.7	69.2	85	650	554	100	200	23	26	177	6692	4010
400	1187	5011B	95.6	94.8	95.1	94.7	79.0	74.3	63.7	99	638	633	110	220	22	29	205	7545	4540
450	1187	5011B	95.9	95.1	95.5	95.0	80.2	76.1	66.3	110	649	712	110	220	21	27	236	8376	4820
500	1189	5011B※	96.0	95.2	95.8	95.0	81.7	77.6	67.8	119	662	791	110	230	22	29	236	9207	5030
600	1188	5810B※	95.3	94.4	95.3	94.9	82.2	79.6	71.7	143	661	949	90	200	20	25	385	10827	6400
700	1188	5810B※	95.4	94.5	95.5	95.1	83.4	81.6	74.9	165	672	1107	100	200	20	25	450	12404	6800
800	1192	6808B※	95.5	94.6	95.1	94.2	82.9	79.3	70.4	189	668	1265	80	200	30	34	992	13161	8600
900	1192	6808B※	95.7	94.9	95.2	94.4	82.4	78.6	69.1	214	666	1423	80	200	23	26	1150	14575	9000
1000	1192	6812B※	95.8	95.0	95.4	94.7	82.8	79.1	70.0	236	670	1581	80	200	28	34	1267	15961	10500
1250	1193	6812B※	96.0	95.2	95.7	95.1	82.2	77.9	67.8	297	666	1977	90	220	26	33	1587	19282	11600
1500	1193	6812B※	96.3	95.6	96.0	95.4	83.1	79.5	70.2	351	676	2372	90	210	25	34	1850	22491	12900
1750	1193	6812B※	96.5	95.8	96.2	95.8	83.8	80.6	71.9	405	683	2768	90	210	26	36	2117	22491	13800

NOTE :

1. Test standard : IEEE-112.
2. Tolerance : NEMA MG1.
3. Number of consec. starts : 2 Cold 1 Hot.
4. Data presented in rating lists are typical values. Guaranteed values on request.
Legally binding performance and specification data is given to the end user once each order is confirmed.
5. This performance data is only for sinepower, not suitable for PWM power source.
6. The voltage and frequency combinations not included in performance data are quoted case by case.
7. With "※" : COPPER ROTOR
8. Without "※" : ALUMINUM ROTOR

TEFC, 8P 2300V 60HZ

OUTPUT HP	FULL	FRAME	EFFICIENCY				POWER FACTOR			CURRENT			TORQUE		Safe Stall		ROTOR WR ² LB-FT ²	Max. Load WR ² LB-FT ²	APPROX. WEIGHT LBS
	LOAD	NO.	NOM.	MIN.	3/4	1/2	FULL	3/4	1/2	Rated	Starting	Starting	Starting	Max.	Time(s)				
	RPM	(EG)	%	%	%	%	%	%	%	A	%	A	%	%	HOT SEC	COLD SEC			
200	888	5009B	93.9	93.9	93.9	93.4	73.8	69.1	58.9	54	585	316	90	200	24	30	140	8099	3610
250	887	5009B	94.1	93.0	94.0	93.5	74.8	70.8	61.4	67	594	395	90	200	24	30	174	9953	3920
300	888	5011B	94.2	93.1	94.1	93.7	74.3	69.5	58.8	80	591	474	90	200	24	29	209	11743	4630
350	887	5011B	94.4	93.4	94.3	93.9	75.3	71.0	60.8	92	600	554	90	200	24	30	244	13512	5040
400	891	5011B※	94.5	93.6	94.4	93.8	81.6	77.7	67.9	97	651	633	90	200	25	31	302	15260	5170
450	890	5810B※	94.6	93.6	94.5	93.8	75.9	70.3	58.5	117	607	712	80	200	28	38	364	16986	6200
500	890	5810B※	94.6	93.6	94.5	93.9	76.8	71.7	60.3	129	613	791	80	200	25	37	393	18670	6400
600	890	5810B※	94.6	93.6	94.6	94.1	77.1	72.2	61.1	154	616	949	80	200	28	35	459	21995	6800
700	891	5810B※	94.8	93.8	94.7	94.3	76.0	70.1	58.0	182	609	1107	80	200	27	33	539	25255	7400
700	891	6808B※	95.0	94.1	94.5	93.3	74.9	69.1	57.2	184	601	1107	100	210	29	35	1133	25267	8900
800	891	6808B※	95.0	94.1	94.6	93.5	75.5	70.0	58.5	209	606	1265	100	200	29	35	1133	25267	9400
900	891	6808B※	95.2	94.3	94.9	93.8	75.2	69.4	57.7	235	604	1423	110	210	33	40	1219	28020	9900
1000	891	6812B※	95.4	94.5	95.0	94.0	75.2	69.4	57.6	261	606	1581	110	210	31	41	1437	30755	11600
1250	891	6812B※	95.6	94.8	95.3	94.3	77.4	72.5	61.7	317	625	1977	100	200	30	36	1790	37303	13000
1500	892	6812B※	95.8	95.0	95.6	95.0	76.1	70.6	59.1	385	616	2372	110	210	27	32	2000	37303	14100

NOTE :

1. Test standard : IEEE-112.
2. Tolerance : NEMA MG1.
3. Number of consec. starts : 2 Cold 1 Hot.
4. Data presented in rating lists are typical values. Guaranteed values on request.
Legally binding performance and specification data is given to the end user once each order is confirmed.
5. This performance data is only for sinepower, not suitable for PWM power source.
6. The voltage and frequency combinations not included in performance data are quoted case by case.
7. With "※" : COPPER ROTOR
8. Without "※" : ALUMINUM ROTOR

PERFORMANCE DATA																MODEL AFHP	
3-PHASE PREMIUM EFFICIENCY INDUCTION MOTORS MEDIUM VOLTAGE SQUIRREL CAGE																4160V 60Hz	

TEFC, 2P 4160V 60HZ

OUTPUT HP	FULL LOAD RPM	FRAME NO. (EG)	EFFICIENCY				POWER FACTOR			CURRENT			TORQUE		Safe Stall Time(s)		ROTOR WR ² LB-FT ²	Max. Load WR ² LB-FT ²	APPROX. WEIGHT LBS
			NOM.	MIN.	3/4	1/2	FULL	3/4	1/2	Rated	Starting	Starting	Starting	Max.	HOT	COLD			
			%	%	%	%	%	%	%	A	%	A	%	%	SEC	SEC			
250	3579	5009A	95.0	94.1	94.8	94.2	84.0	80.8	72.6	32	674	219	90	220	20	26	45	213	3220
300	3581	5009A	95.0	94.1	94.8	94.2	85.9	83.3	75.7	38	689	262	90	220	20	26	56	237	3440
350	3579	5009A	95.0	94.1	94.9	94.3	88.1	86.7	81.6	43	707	306	95	220	21	26	67	284	3660
400	3581	5011A	95.0	94.1	94.9	94.4	88.5	88.0	83.9	49	710	350	95	220	23	28	78	308	4150
450	3582	5011A	95.0	94.1	94.9	94.4	88.6	88.1	83.7	55	711	393	95	220	25	31	89	355	4390
500	3581	5011A	95.0	94.1	94.9	94.4	89.5	88.9	85.7	61	718	437	95	210	21	26	97	379	4540
600	3577	5011A※	95.4	94.5	95.1	94.2	87.1	87.7	83.2	75	702	525	95	210	28	32	103	450	4770
700	3584	5810A※	95.4	94.5	95.2	94.5	87.7	87.2	83.8	87	707	612	110	220	20	30	155	497	6100
800	3585	5810A※	95.6	94.8	95.4	94.8	88.1	87.6	84.2	98	711	699	110	220	20	30	177	568	6400
900	3584	5810A※	95.6	94.8	95.4	94.9	87.4	86.7	82.8	112	705	787	110	220	28	39	177	616	6500

NOTE :

1. Test standard : IEEE-112.
2. Tolerance : NEMA MG1.
3. Number of consec. starts : 2 Cold 1 Hot.
4. Data presented in rating lists are typical values. Guaranteed values on request.
Legally binding performance and specification data is given to the end user once each order is confirmed.
5. This performance data is only for sinepower, not suitable for PWM power source.
6. The voltage and frequency combinations not included in performance data are quoted case by case.
7. With "※" : COPPER ROTOR
8. Without "※" : ALUMINUM ROTOR

TEFC, 4P 4160V 60HZ

OUTPUT HP	FULL LOAD RPM	FRAME NO. (EG)	EFFICIENCY				POWER FACTOR			CURRENT			TORQUE		Safe Stall Time(s)		ROTOR WR ² LB-FT ²	Max. Load WR ² LB-FT ²	APPROX. WEIGHT LBS
			NOM.	MIN.	3/4	1/2	FULL	3/4	1/2	Rated	Starting	Starting	Starting	Max.	HOT	COLD			
			%	%	%	%	%	%	%	A	%	A	%	%	SEC	SEC			
250	1780	5009B	95.0	94.1	94.9	94.1	85.6	83.3	76.5	32	686	219	90	200	22	27	113	1364	3450
300	1780	5009B	95.0	94.1	94.9	94.1	86.1	84.5	78.6	38	691	262	90	200	23	26	127	1620	3580
350	1785	5009B	95.0	94.1	94.9	94.1	84.1	81.1	72.8	45	675	306	90	200	22	29	141	1854	3700
400	1785	5011B	95.0	94.1	94.9	94.3	85.7	83.0	75.5	51	688	350	90	200	21	27	155	2089	3840
450	1783	5011B	95.0	94.1	94.9	94.3	86.9	85.3	79.6	56	698	393	90	200	22	27	168	2302	4210
500	1783	5011B	95.0	94.1	94.9	94.4	87.0	85.3	79.5	63	698	437	90	200	29	35	185	2536	4380
600	1784	5011B	95.4	94.5	95.3	94.8	87.3	85.5	79.6	75	703	525	100	200	22	28	220	2962	4690
700	1787	5810B※	95.4	94.5	95.3	94.8	84.9	83.4	77.7	90	684	612	100	200	25	35	229	3389	6500
800	1788	5810B※	95.6	94.8	95.6	95.1	84.8	82.7	76.1	102	685	699	100	200	21	29	262	3794	6800
900	1788	5810B※	95.6	94.8	95.6	95.1	85.0	83.1	76.9	115	686	787	110	210	22	28	281	4177	6800
1000	1788	5810B※	95.6	94.8	95.5	95.1	84.7	82.8	76.4	128	684	874	100	210	24	28	299	4561	7000
1000	1791	6808B※	95.8	95.0	95.4	94.1	83.0	79.9	71.5	130	671	874	100	210	26	36	556	4061	8700
1250	1791	6808B※	96.0	95.2	95.6	94.5	83.0	80.0	71.6	162	673	1093	100	210	27	36	734	4878	9300
1500	1791	6812B※	96.1	95.4	95.7	94.8	84.1	81.4	73.8	192	683	1312	100	220	30	34	954	5174	11700
1750	1792	6812B※	96.3	95.6	96.0	95.1	83.8	80.7	72.5	225	682	1530	110	230	23	26	1095	5831	12600
2000	1792	6812B※	96.5	95.8	96.2	95.3	83.1	79.6	70.4	258	677	1749	110	230	28	34	1189	6453	13400

NOTE :

1. Test standard : IEEE-112.
2. Tolerance : NEMA MG1.
3. Number of consec. starts : 2 Cold 1 Hot.
4. Data presented in rating lists are typical values. Guaranteed values on request.
Legally binding performance and specification data is given to the end user once each order is confirmed.
5. This performance data is only for sinepower, not suitable for PWM power source.
6. The voltage and frequency combinations not included in performance data are quoted case by case.
7. With "※" : COPPER ROTOR
8. Without "※" : ALUMINUM ROTOR

TEFC, 6P 4160V 60HZ

OUTPUT HP	FULL LOAD RPM	FRAME NO. (EG)	EFFICIENCY				POWER FACTOR			CURRENT			TORQUE		Safe Stall Time(s)		ROTOR WR ² LB-FT ²	Max. Load WR ² LB-FT ²	APPROX. WEIGHT LBS
			NOM.	MIN.	3/4	1/2	FULL	3/4	1/2	Rated	Starting	Starting	Starting	Max.	HOT SEC	COLD SEC			
			%	%	%	%	%	%	%	A	%	A	%	%					
200	1188	5009B	95.0	94.1	94.6	94.2	74.6	68.7	56.3	29	598	175	110	220	20	26	104	4028	3350
250	1188	5009B	95.0	94.1	94.9	94.4	76.0	70.6	58.8	36	609	219	110	220	21	26	128	4923	3560
300	1187	5009B	95.0	94.1	94.9	94.5	77.6	73.0	62.4	42	623	262	110	220	22	27	153	5818	3790
350	1186	5009B	95.5	94.6	94.9	94.5	79.6	76.7	68.2	48	642	306	110	210	23	26	177	6692	4010
400	1188	5011B	95.6	94.8	95.1	94.7	78.0	73.3	62.7	56	630	350	120	220	22	29	205	7545	4540
450	1188	5011B	95.9	95.1	95.2	94.7	79.2	75.1	65.3	61	641	393	120	220	21	27	236	8376	4820
500	1190	5011B※	96.0	95.2	95.2	94.6	80.7	76.6	66.8	67	654	437	120	230	22	29	236	9207	5030
600	1189	5810B※	95.3	94.4	95.3	94.9	81.2	78.6	70.7	80	653	525	100	210	20	25	385	10827	6400
700	1189	5810B※	95.4	94.5	95.5	95.1	82.4	80.6	73.9	92	664	612	110	210	20	25	450	12404	6800
800	1191	6808B※	95.5	94.6	95.1	94.2	81.9	78.3	69.4	106	660	699	90	210	30	34	992	13161	8600
900	1191	6808B※	95.7	94.9	95.2	94.4	81.4	77.6	68.1	120	658	787	90	210	23	26	1150	14575	9000
1000	1191	6812B※	95.8	95.0	95.4	94.7	81.8	78.1	69.0	132	662	874	90	210	28	34	1267	15961	10500
1250	1192	6812B※	96.0	95.2	95.7	95.1	81.2	76.9	66.8	166	658	1093	100	230	26	33	1587	19282	11600
1500	1192	6812B※	96.3	95.6	96.0	95.4	82.1	78.5	69.2	196	668	1312	100	220	25	34	1850	22491	12900
1750	1192	6812B※	96.5	95.8	96.2	95.8	82.8	79.6	70.9	227	675	1530	100	220	26	36	2117	22491	13800

NOTE :

1. Test standard : IEEE-112.
2. Tolerance : NEMA MG1.
3. Number of consec. starts : 2 Cold 1 Hot.
4. Data presented in rating lists are typical values. Guaranteed values on request.
Legally binding performance and specification data is given to the end user once each order is confirmed.
5. This performance data is only for sinepower, not suitable for PWM power source.
6. The voltage and frequency combinations not included in performance data are quoted case by case.
7. With "※" : COPPER ROTOR
8. Without "※" : ALUMINUM ROTOR

TEFC, 8P 4160V 60HZ

OUTPUT HP	FULL	FRAME	EFFICIENCY				POWER FACTOR			CURRENT			TORQUE		Safe Stall		ROTOR	Max. Load	APPROX.
	LOAD	NO.	NOM.	MIN.	3/4	1/2	FULL	3/4	1/2	Rated	Starting	Starting	Starting	Max.	Time(s)		WR ²	WR ²	WEIGHT
	RPM	(EG)	%	%	%	%	%	%	%	A	%	A	%	%	HOT SEC	COLD SEC	LB-FT ²	LB-FT ²	
200	889	5009B	93.9	93.9	93.9	93.4	72.8	68.1	57.9	30	577	175	100	210	24	30	140	8099	3610
250	888	5009B	94.1	93.0	94.0	93.5	73.8	70.7	61.8	37	586	219	100	210	24	30	174	9953	3920
300	889	5011B	94.2	93.1	94.1	93.7	73.3	68.6	57.8	45	583	262	100	210	24	29	209	11743	4630
350	888	5011B	94.4	93.4	94.3	93.9	74.3	70.0	59.8	52	592	306	100	210	24	30	244	13512	5040
400	891	5011B※	94.5	93.6	94.4	93.8	80.6	76.7	66.9	54	643	350	100	210	25	31	302	15260	5170
450	891	5810B※	94.6	93.6	94.5	93.8	75.9	70.3	58.5	65	607	393	90	210	28	38	364	16986	6200
500	891	5810B※	94.6	93.6	94.5	93.9	76.8	71.7	60.3	71	613	437	90	210	25	37	393	18670	6400
600	891	5810B※	94.6	93.6	94.6	94.1	77.1	72.2	61.1	85	616	525	90	210	28	35	459	21995	6800
700	892	5810B※	94.8	93.8	94.7	94.3	76.0	70.1	58.0	101	609	612	90	210	27	33	539	25255	7400
700	890	6808B※	95.0	94.1	94.5	93.3	73.9	68.1	56.2	103	593	612	110	220	29	35	1133	25267	8900
800	890	6808B※	95.0	94.1	94.6	93.5	74.5	69.0	57.5	117	598	699	110	210	29	35	1133	25267	9400
900	890	6808B※	95.2	94.3	94.9	93.8	74.2	68.4	56.7	132	596	787	120	220	33	40	1219	28020	9900
1000	890	6812B※	95.4	94.5	95.0	94.0	74.2	68.4	56.6	146	598	874	120	220	31	41	1437	30755	11600
1250	890	6812B※	95.6	94.8	95.3	94.3	76.4	71.5	60.7	177	616	1093	110	210	30	36	1790	37303	13000
1500	891	6812B※	95.8	95.0	95.6	95.0	75.1	69.6	58.1	216	608	1312	120	220	27	32	2000	37303	14100

NOTE :

1. Test standard : IEEE-112.
2. Tolerance : NEMA MG1.
3. Number of consec. starts : 2 Cold 1 Hot.
4. Data presented in rating lists are typical values. Guaranteed values on request.
Legally binding performance and specification data is given to the end user once each order is confirmed.
5. This performance data is only for sinepower, not suitable for PWM power source.
6. The voltage and frequency combinations not included in performance data are quoted case by case.
7. With "※" : COPPER ROTOR
8. Without "※" : ALUMINUM ROTOR

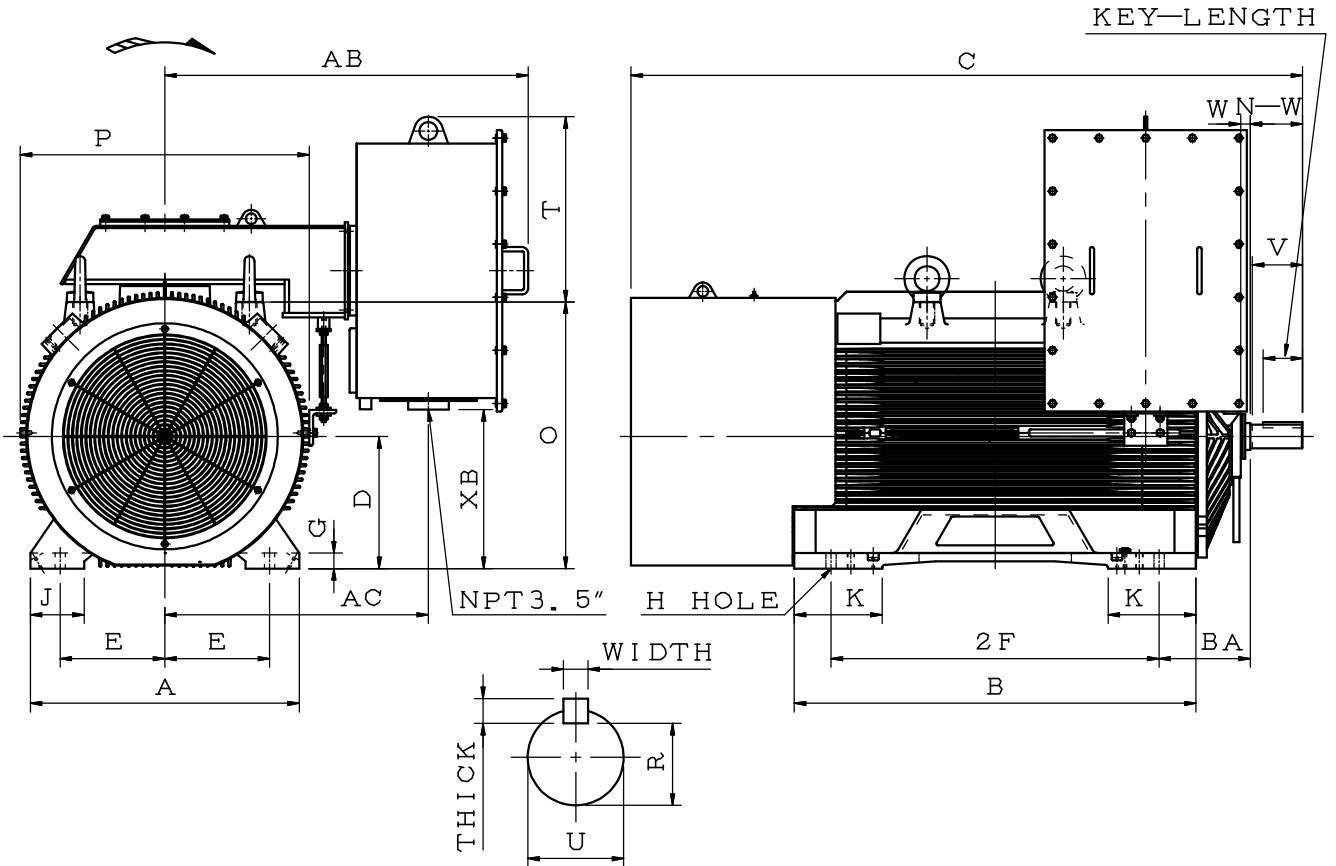
OUTLINE DIMENSION SHEET

3-PHASE PREMIUM EFFICIENCY INDUCTION MOTOR
FRAME SIZE (EG) 5810A

MODEL
AFHP

2P

TOTALLY ENCLOSED FAN COOLED TYPE, SQUIRREL CAGE ROTOR



DIMENSIONS IN INCHES

FRAME SIZE (EG)	POLE	MOUNTING				A	B	C	D	G	J	K
		E	2F	H	BA							
5810A	2P	11.50	36.00	1.13	10.00	29.55	44.10	73.71	14.50	1.70	5.90	9.65
FRAME SIZE (EG)	W	O	P	T	KEY			KEYSEAT	TERMINAL HOUSING			
					WIDTH	THICK	LENGTH	R	AB	AC	XB	
5810A	1.03	29.26	31.73	20.33	0.625	0.625	4.01	2.275	39.90	28.95	17.43	
FRAME SIZE (EG)	SHAFT EXTENSION			BEARINGS								
	N-W	U	V	DRIVE END	OPP. DRIVE END							
5810A	5.75	2.625	5.50	6315C3	6315C3							

- NOTE: 1. DIMENSION D TOLERANCE: +0.00INCH, -0.06INCH
 2. DIMENSION U TOLERANCE: +0.000INCH, -0.001INCH
 3. DIMENSION R TOLERANCE: +0.000INCH, -0.015INCH
 4. DIMENSION V IS THE LENGTH OF STRAIGHT PART OF SHAFT
 5. FOR DIRECT FLEXIBLE COUPLING

OUTLINE DIMENSION SHEET

3-PHASE PREMIUM EFFICIENCY INDUCTION MOTOR
FRAME SIZE (EG) 5810A

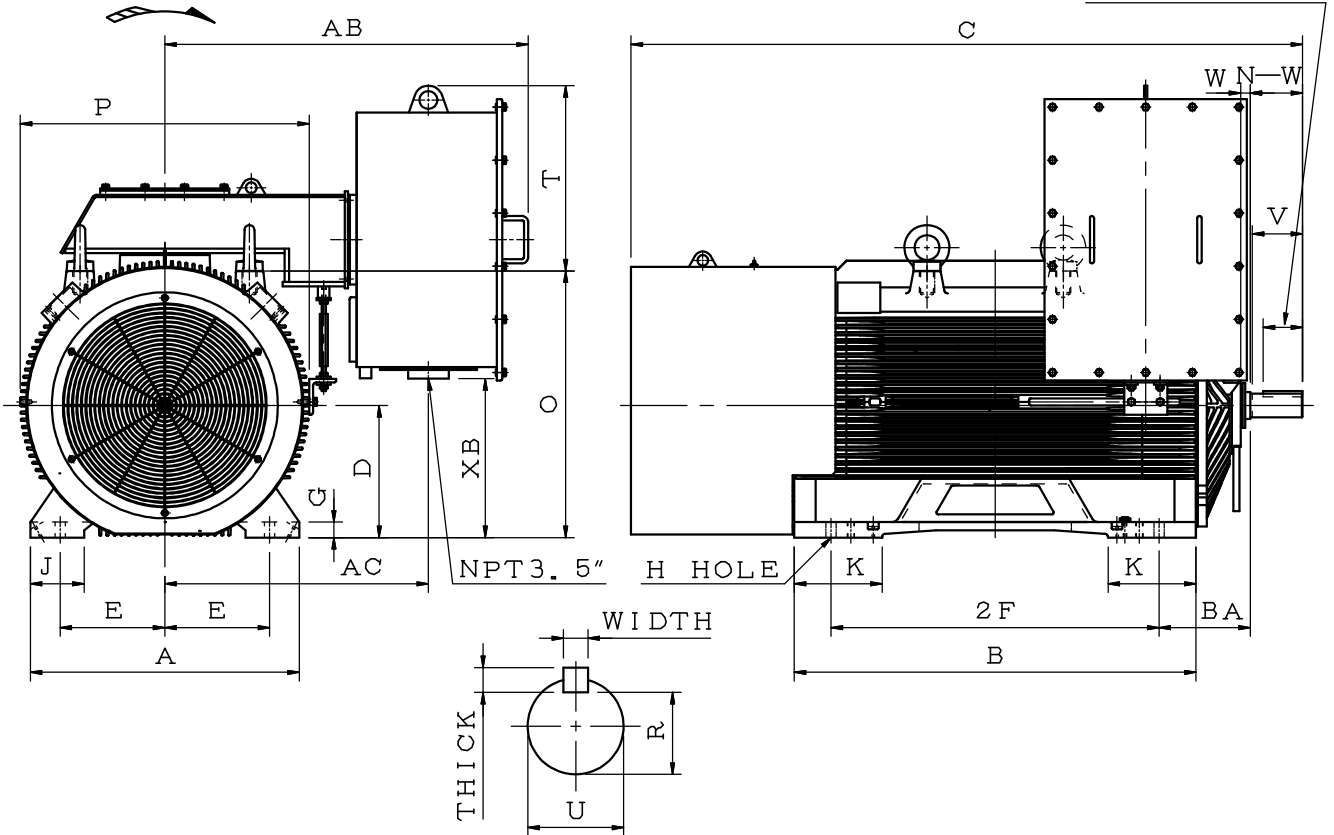
MODEL

AFHP

2P

TOTALLY ENCLOSED FAN COOLED TYPE, SQUIRREL CAGE ROTOR

KEY—LENGTH



DIMENSIONS IN MM

FRAME SIZE (EG)	POLE	MOUNTING				A	B	C	D	G	J	K
		E	2F	H	BA							
5810A	2P	292.1	914.4	28.57	254	750	1120	1872.25	368.3	43.3	150	245
FRAME SIZE (EG)	W	O	P	T	KEY			KEYSEAT	TERMINAL HOUSING			
					WIDTH	THICK	LENGTH	R	AB	AC	XB	
5810A	26.20	743.3	806	516.5	15.875	15.875	102	57.785	1013.2	735	442.8	
FRAME SIZE (EG)	SHAFT EXTENSION			BEARINGS								
	N-W	U	V	DRIVE END	OPP. DRIVE END							
5810A	146.05	66.675	140.05	6315C3	6315C3							

- NOTE: 1. DIMENSION D TOLERANCE: +0.00MM, -1.52MM
 2. DIMENSION U TOLERANCE: +0.000MM, -0.025MM
 3. DIMENSION R TOLERANCE: +0.000MM, -0.381MM
 4. DIMENSION V IS THE LENGTH OF STRAIGHT PART OF SHAFT
 5. FOR DIRECT FLEXIBLE COUPLING

OUTLINE DIMENSION SHEET

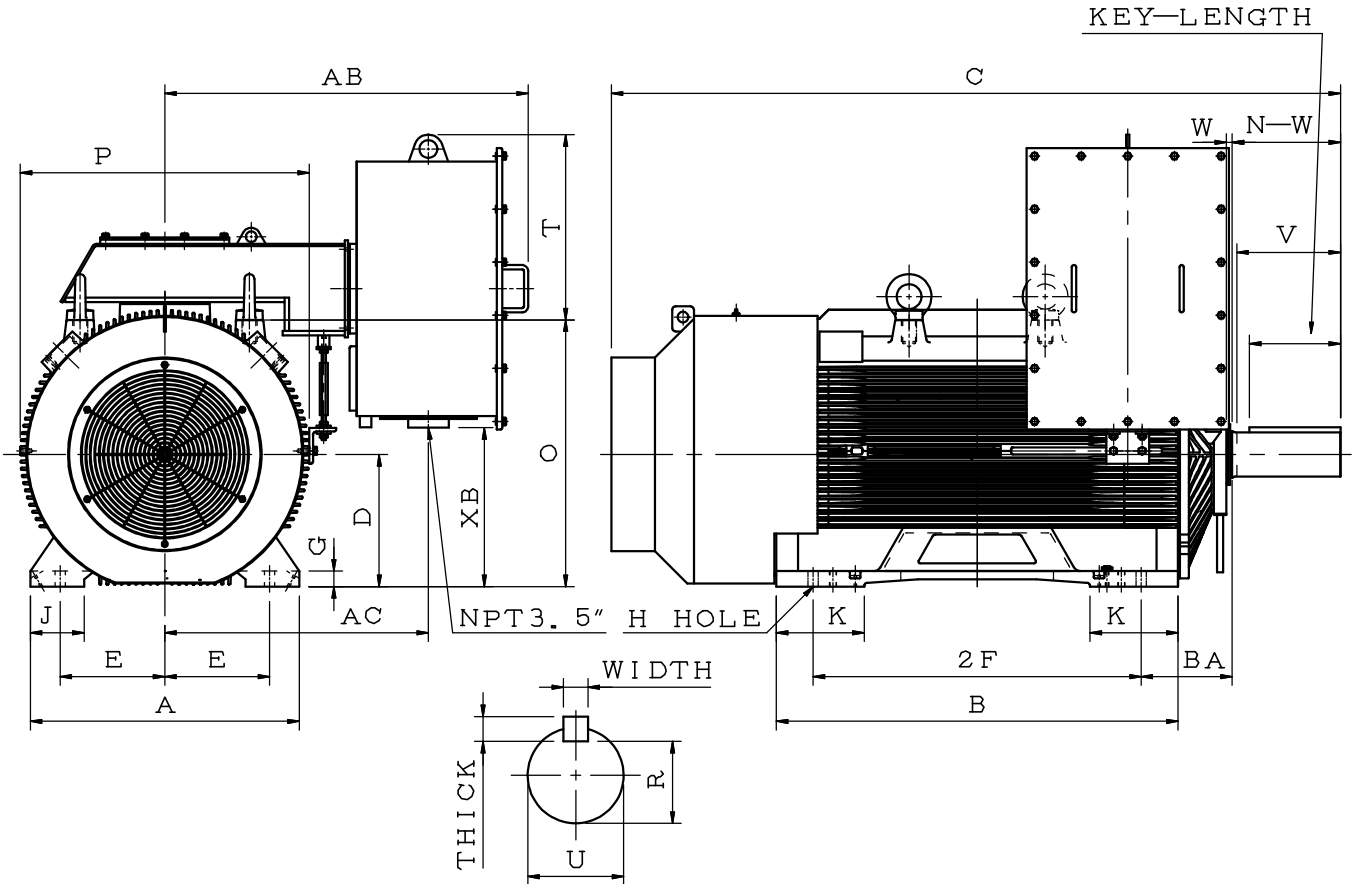
3-PHASE PREMIUM EFFICIENCY INDUCTION MOTOR
FRAME SIZE (EG) 5810B

MODEL

AFHP

4P, 6P, 8P

TOTALLY ENCLOSED FAN COOLED TYPE, SQUIRREL CAGE ROTOR



DIMENSIONS IN INCHES

FRAME SIZE (EG)	POLE	MOUNTING				A	B	C	D	G	J	K
		E	2F	H	BA							
5810B	4P~8P	11.50	36.00	1.13	10.00	29.55	44.10	79.25	14.50	1.70	5.90	9.65
FRAME SIZE (EG)	W	O	P	T	KEY			KEYSEAT	TERMINAL HOUSING			
					WIDTH	THICK	LENGTH	R	AB	AC	XB	
5810B	0.83	29.26	31.73	20.33	1.250	1.250	10.00	4.169	39.90	28.95	17.43	
FRAME SIZE (EG)	SHAFT EXTENSION			BEARINGS								
	N-W	U	V	DRIVE END	OPP. DRIVE END							
5810B	11.88	4.875	11.38	6326C3	6322C3							

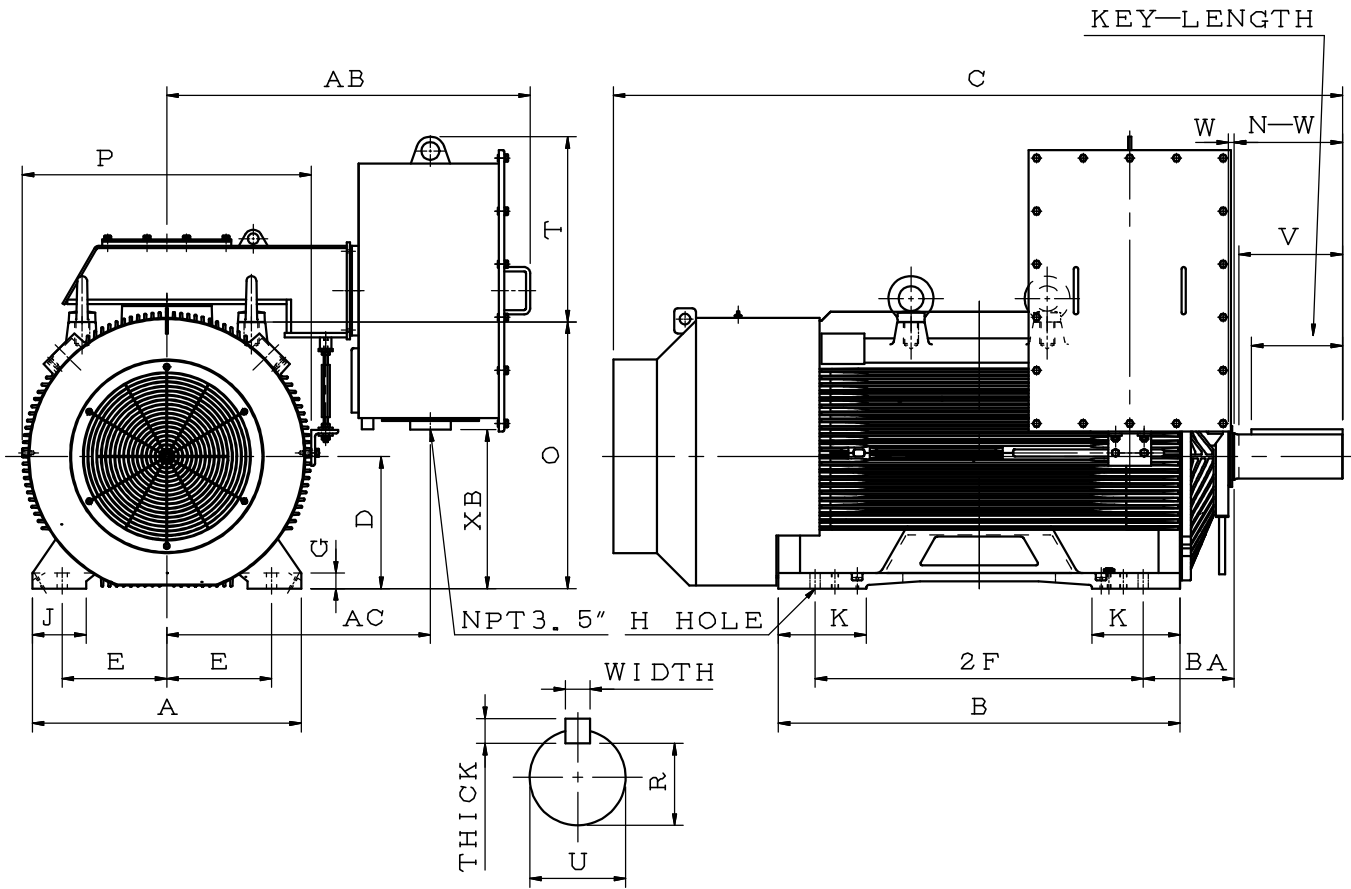
- NOTE: 1. DIMENSION D TOLERANCE: +0.00INCH, -0.06INCH
 2. DIMENSION U TOLERANCE: +0.000INCH, -0.001INCH
 3. DIMENSION R TOLERANCE: +0.000INCH, -0.015INCH
 4. DIMENSION V IS THE LENGTH OF STRAIGHT PART OF SHAFT
 5. FOR DIRECT FLEXIBLE COUPLING

OUTLINE DIMENSION SHEET

MODEL
AFHP
4P, 6P, 8P

3-PHASE PREMIUM EFFICIENCY INDUCTION MOTOR
FRAME SIZE (EG) 5810B

TOTALLY ENCLOSED FAN COOLED TYPE, SQUIRREL CAGE ROTOR



DIMENSIONS IN MM

FRAME SIZE (EG)	POLE	MOUNTING				A	B	C	D	G	J	K
		E	2F	H	BA							
5810B	4P~8P	292.1	914.4	28.57	254	750	1120	2012.95	368.3	43.3	150	245
FRAME SIZE (EG)	W	O	P	T	KEY			KEYSEAT	TERMINAL HOUSING			
					WIDTH	THICK	LENGTH	R	AB	AC	XB	
5810B	21.20	743.3	806	516.5	31.750	31.750	254	105.892	1013.2	735	442.8	
FRAME SIZE (EG)	SHAFT EXTENSION			BEARINGS								
	N-W	U	V	DRIVE END	OPP. DRIVE END							
5810B	301.75	123.825	289.05	6326C3	6322C3							

- NOTE: 1. DIMENSION D TOLERANCE: +0.00MM, -1.52MM
 2. DIMENSION U TOLERANCE: +0.000MM, -0.025MM
 3. DIMENSION R TOLERANCE: +0.000MM, -0.381MM
 4. DIMENSION V IS THE LENGTH OF STRAIGHT PART OF SHAFT
 5. FOR DIRECT FLEXIBLE COUPLING

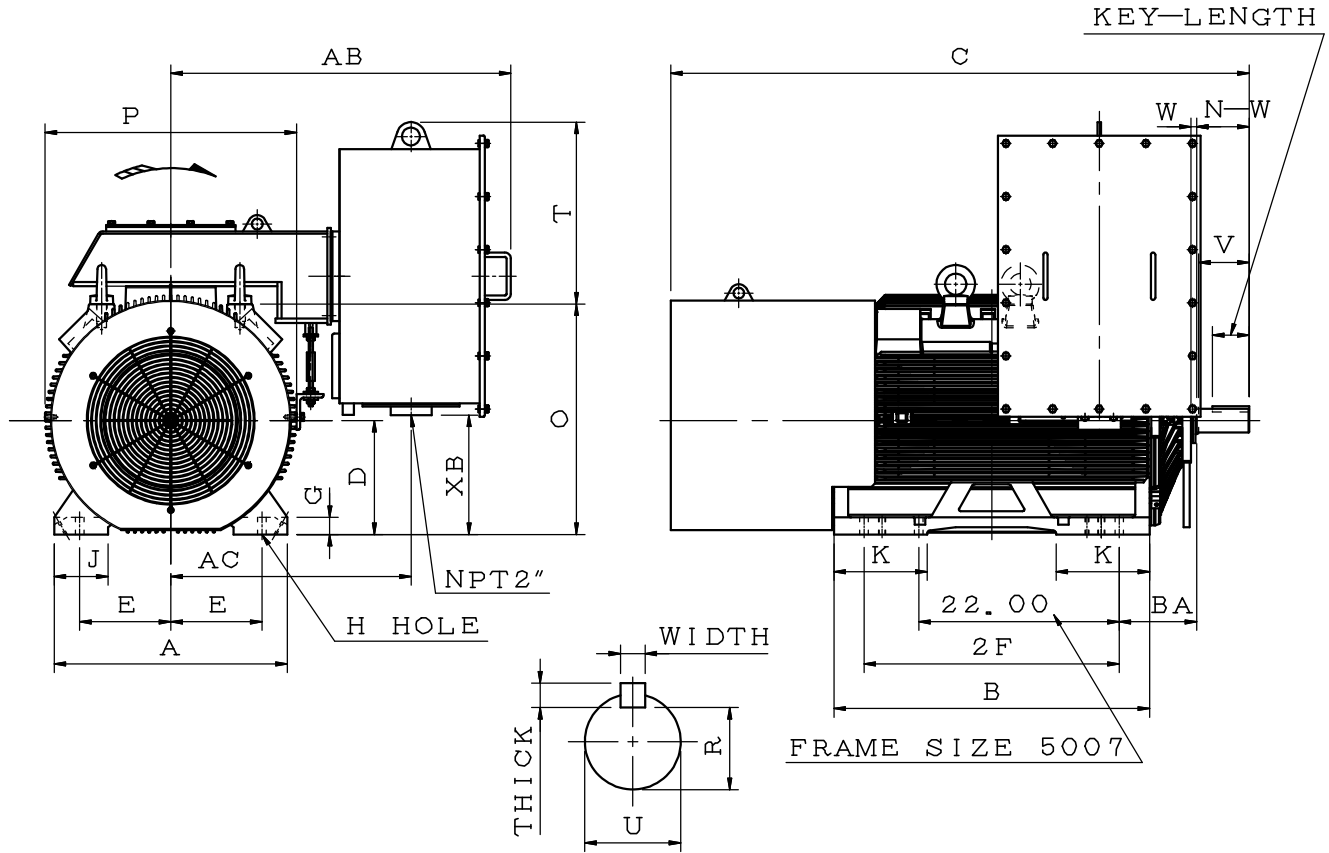
OUTLINE DIMENSION SHEET

MODEL
AFHP

3-PHASE PREMIUM EFFICIENCY INDUCTION MOTOR
FRAME SIZE (EG) 5009A

2P

TOTALLY ENCLOSED FAN COOLED TYPE, SQUIRREL CAGE ROTOR



DIMENSIONS IN INCHES

FRAME SIZE (EG)	POLE	MOUNTING				A	B	C	D	G	J	K
		E	2F	H	BA							
5009A	2P	10.00	28.00	0.94	8.50	25.60	34.65	63.55	12.50	1.85	5.90	10.24

FRAME SIZE (EG)	W	O	P	T	KEY			KEYSEAT	TERMINAL HOUSING		
					WIDTH	THICK	LENGTH	R	AB	AC	XB
5009A	0.67	25.30	27.60	19.96	0.625	0.625	4.01	2.275	37.33	26.40	13.09

FRAME SIZE (EG)	SHAFT EXTENSION			BEARINGS	
	N-W	U	V	DRIVE END	OPP. DRIVE END
5009A	5.75	2.625	5.50	6315C3	6315C3

- NOTE: 1. DIMENSION D TOLERANCE: +0.00 INCH, -0.06 INCH
 2. DIMENSION U TOLERANCE: +0.000 INCH, -0.001 INCH
 3. DIMENSION R TOLERANCE: +0.000 INCH, -0.015 INCH
 4. DIMENSION V IS THE LENGTH OF STRAIGHT PART OF SHAFT
 5. FOR DIRECT FLEXIBLE COUPLING

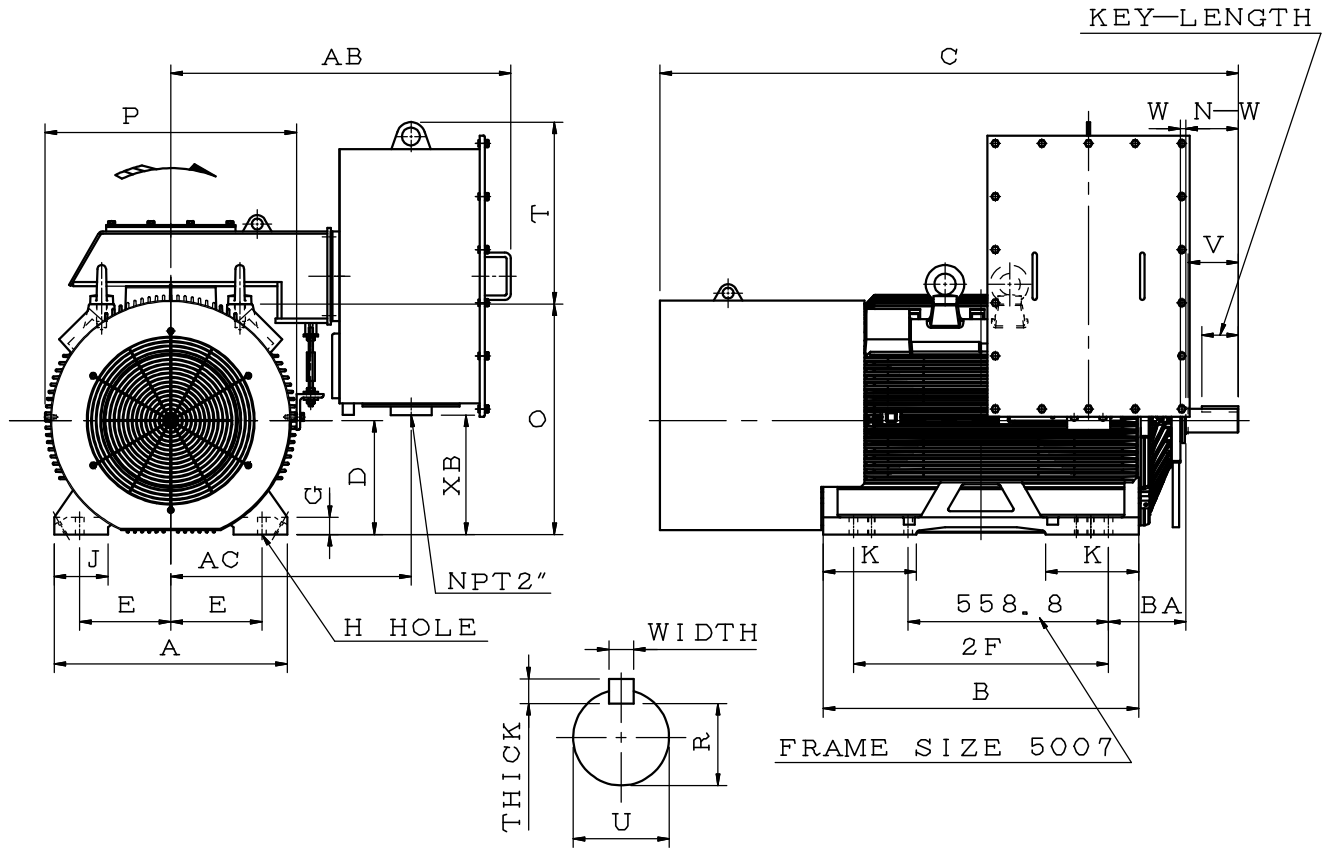
OUTLINE DIMENSION SHEET

MODEL
AFHP

2P

3-PHASE PREMIUM EFFICIENCY INDUCTION MOTOR
FRAME SIZE (EG) 5009A

TOTALLY ENCLOSED FAN COOLED TYPE, SQUIRREL CAGE ROTOR



DIMENSIONS IN MM

FRAME SIZE (EG)	POLE	MOUNTING				A	B	C	D	G	J	K
		E	2F	H	BA							
5009A	2P	254.0	711.2	24.0	215.9	650	880	1614.15	317.5	47.5	150	260

FRAME SIZE (EG)	W	O	P	T	KEY			KEYSEAT	TERMINAL HOUSING		
					WIDTH	THICK	LENGTH	R	AB	AC	XB
5009A	17.1	642.5	701	507	15.875	15.875	102	57.785	948.2	670	332.5

FRAME SIZE (EG)	SHAFT EXTENSION			BEARINGS	
	N-W	U	V	DRIVE END	OPP. DRIVE END
5009A	146.05	66.675	140.05	6315C3	6315C3

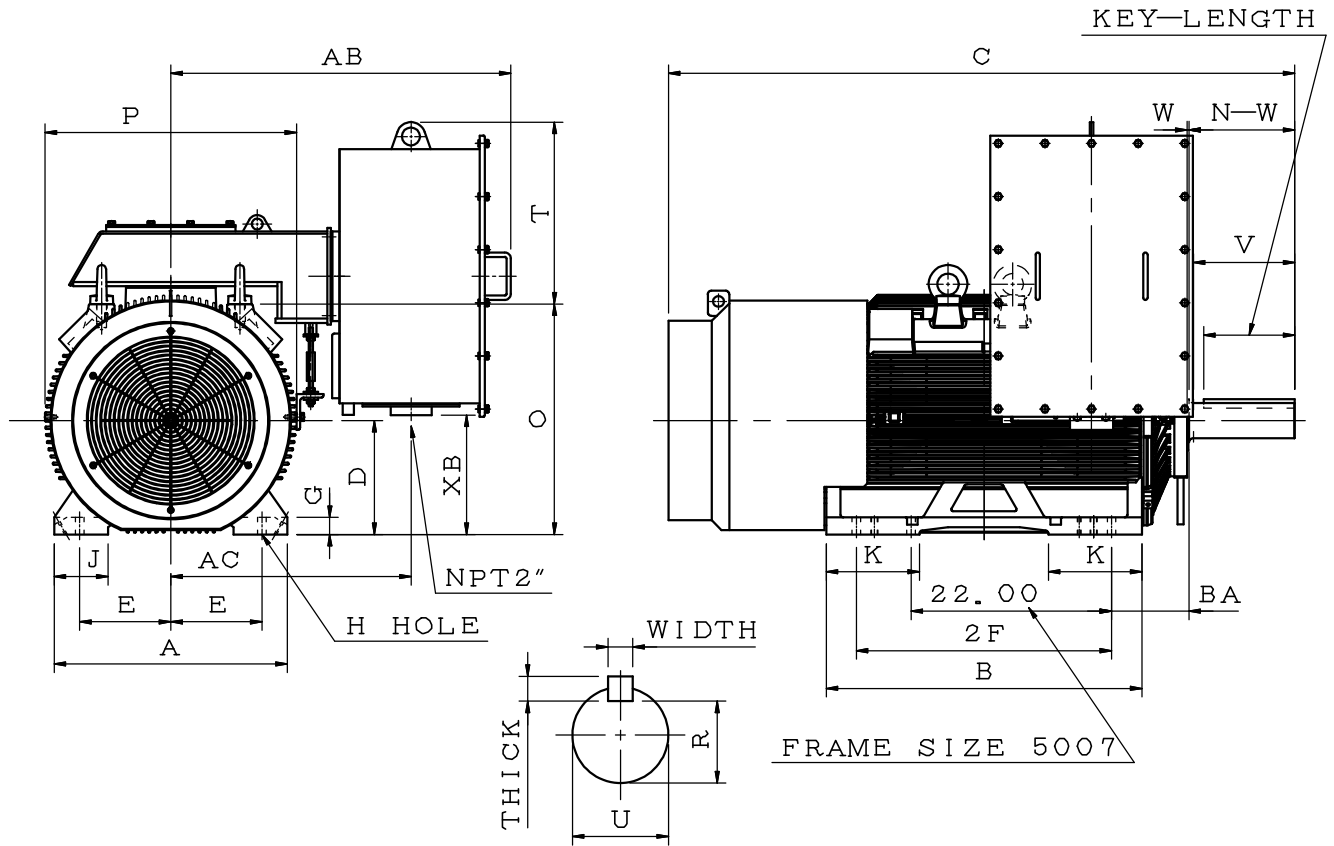
- NOTE: 1. DIMENSION D TOLERANCE: +0.00MM, -1.52MM
 2. DIMENSION U TOLERANCE: +0.000MM, -0.025MM
 3. DIMENSION R TOLERANCE: +0.000MM, -0.381MM
 4. DIMENSION V IS THE LENGTH OF STRAIGHT PART OF SHAFT
 5. FOR DIRECT FLEXIBLE COUPLING

OUTLINE DIMENSION SHEET

MODEL
AFHP
4P, 6P, 8P

3-PHASE PREMIUM EFFICIENCY INDUCTION MOTOR
FRAME SIZE (EG) 5009B

TOTALLY ENCLOSED FAN COOLED TYPE, SQUIRREL CAGE ROTOR



DIMENSIONS IN INCHES

FRAME SIZE (EG)	POLE	MOUNTING				A	B	C	D	G	J	K
		E	2F	H	BA							
5009B	4P~8P	10.00	28.00	0.94	8.50	25.60	34.65	68.83	12.50	1.85	5.90	10.24

FRAME SIZE (EG)	W	O	P	T	KEY			KEYSEAT	TERMINAL HOUSING		
					WIDTH	THICK	LENGTH	R	AB	AC	XB
5009B	0.48	25.30	27.60	19.96	1.000	1.000	10.00	3.309	37.33	26.40	13.09

FRAME SIZE (EG)	SHAFT EXTENSION			BEARINGS	
	N-W	U	V	DRIVE END	OPP. DRIVE END
5009B	11.62	3.875	11.12	6324C3	6320C3

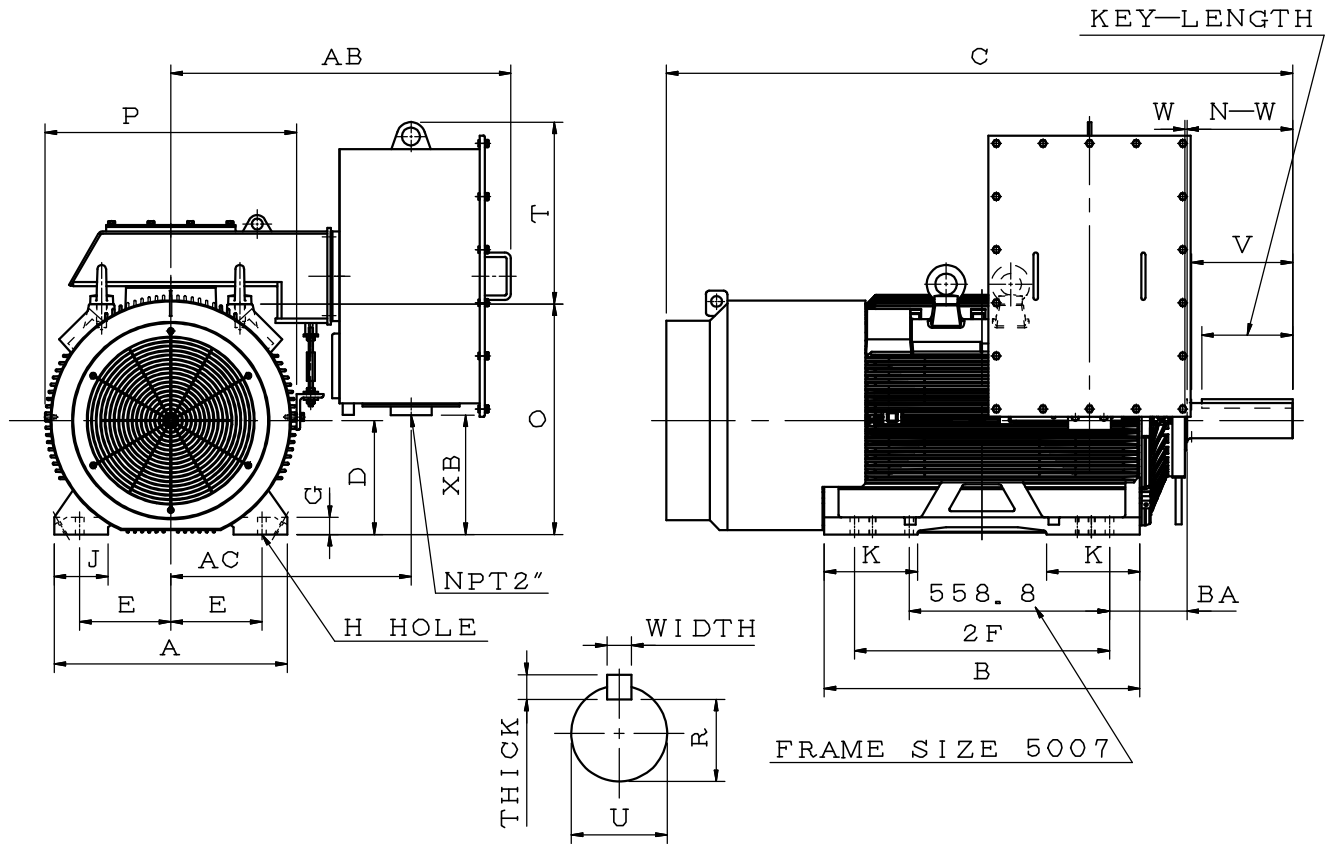
- NOTE: 1. DIMENSION D TOLERANCE: +0.00 INCH, -0.06 INCH
 2. DIMENSION U TOLERANCE: +0.000 INCH, -0.001 INCH
 3. DIMENSION R TOLERANCE: +0.000 INCH, -0.015 INCH
 4. DIMENSION V IS THE LENGTH OF STRAIGHT PART OF SHAFT
 5. FOR DIRECT FLEXIBLE COUPLING

OUTLINE DIMENSION SHEET

MODEL
AFHP
4P, 6P, 8P

3-PHASE PREMIUM EFFICIENCY INDUCTION MOTOR
FRAME SIZE (EG) 5009B

TOTALLY ENCLOSED FAN COOLED TYPE, SQUIRREL CAGE ROTOR



DIMENSIONS IN MM

FRAME SIZE (EG)	POLE	MOUNTING				A	B	C	D	G	J	K
		E	2F	H	BA							
5009B	4P~8P	254.0	711.2	24.0	215.9	650	880	1748.25	317.5	47.5	150	260

FRAME SIZE (EG)	W	O	P	T	KEY			KEYSEAT	TERMINAL HOUSING		
					WIDTH	THICK	LENGTH	R	AB	AC	XB
5009B	12.1	642.5	701	507	25.40	25.40	254	84.048	948.2	670	332.5

FRAME SIZE (EG)	SHAFT EXTENSION			BEARINGS	
	N-W	U	V	DRIVE END	OPP. DRIVE END
5009B	295.15	98.425	282.45	6324C3	6320C3

- NOTE: 1. DIMENSION D TOLERANCE: +0.00MM, -1.52MM
 2. DIMENSION U TOLERANCE: +0.000MM, -0.025MM
 3. DIMENSION R TOLERANCE: +0.000MM, -0.381MM
 4. DIMENSION V IS THE LENGTH OF STRAIGHT PART OF SHAFT
 5. FOR DIRECT FLEXIBLE COUPLING

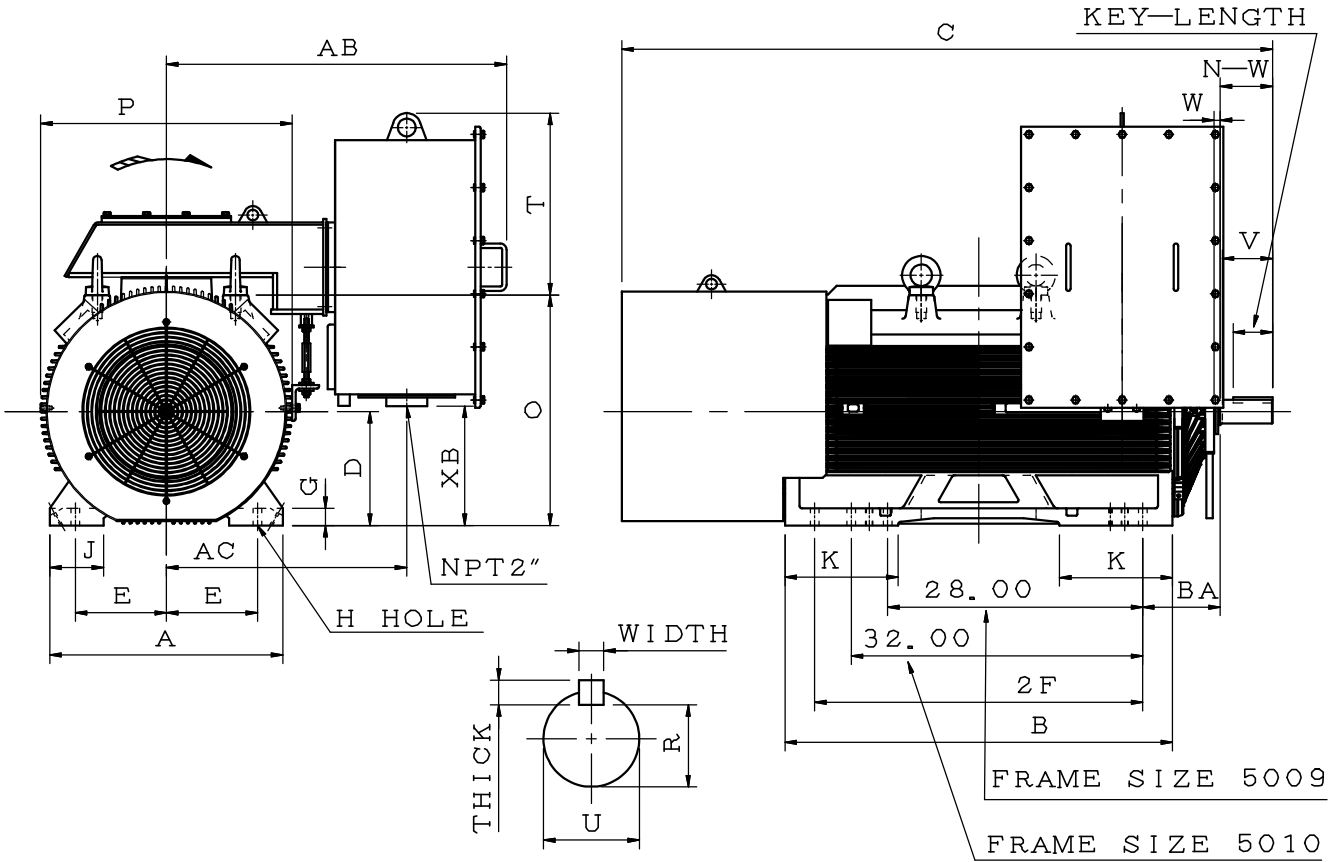
OUTLINE DIMENSION SHEET

MODEL
AFHP

3-PHASE PREMIUM EFFICIENCY INDUCTION MOTOR
FRAME SIZE (EG) 5011A

2P

TOTALLY ENCLOSED FAN COOLED TYPE, SQUIRREL CAGE ROTOR



DIMENSIONS IN INCHES

FRAME SIZE (EG)	POLE	MOUNTING				A	B	C	D	G	J	K
		E	2F	H	BA							
5011A	2P	10.00	36.00	0.94	8.50	25.60	42.52	71.42	12.50	1.85	5.90	12.40
FRAME SIZE (EG)	W	O	P	T	KEY			KEYSEAT	TERMINAL HOUSING			
					WIDTH	THICK	LENGTH	R	AB	AC	XB	
5011A	0.67	25.30	27.60	19.96	0.625	0.625	4.01	2.275	37.33	26.40	13.09	
FRAME SIZE (EG)	SHAFT EXTENSION			BEARINGS								
	N-W	U	V	DRIVE END	OPP. DRIVE END							
5011A	5.75	2.625	5.50	6315C3	6315C3							

- NOTE: 1. DIMENSION D TOLERANCE: +0.00INCH, -0.06INCH
 2. DIMENSION U TOLERANCE: +0.000INCH, -0.001INCH
 3. DIMENSION R TOLERANCE: +0.000INCH, -0.015INCH
 4. DIMENSION V IS THE LENGTH OF STRAIGHT PART OF SHAFT
 5. FOR DIRECT FLEXIBLE COUPLING

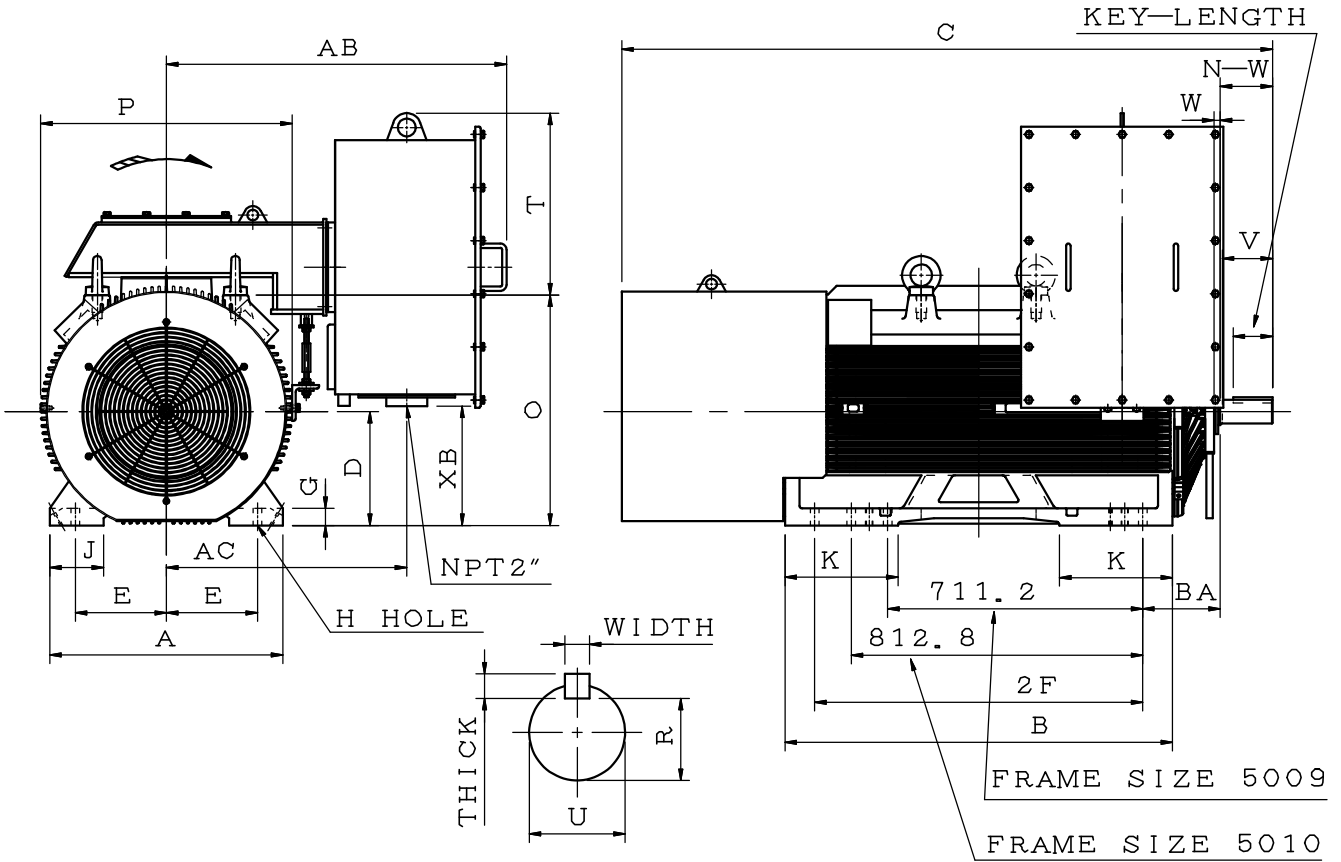
OUTLINE DIMENSION SHEET

MODEL
AFHP

3-PHASE PREMIUM EFFICIENCY INDUCTION MOTOR
FRAME SIZE (EG) 5011A

2P

TOTALLY ENCLOSED FAN COOLED TYPE, SQUIRREL CAGE ROTOR



DIMENSIONS IN MM

FRAME SIZE (EG)	POLE	MOUNTING				A	B	C	D	G	J	K
		E	2F	H	BA							
5011A	2P	254.0	914.4	24.0	215.9	650	1080	1814.15	317.5	47.5	150	315
FRAME SIZE (EG)	W	O	P	T	KEY			KEYSEAT	TERMINAL HOUSING			
					WIDTH	THICK	LENGTH	R	AB	AC	XB	
5011A	17.1	642.5	701	507	15.875	15.875	102	57.785	948.2	670	332.5	
FRAME SIZE (EG)	SHAFT EXTENSION			BEARINGS								
	N-W	U	V	DRIVE END	OPP. DRIVE END							
5011A	146.05	66.675	140.05	6315C3	6315C3							

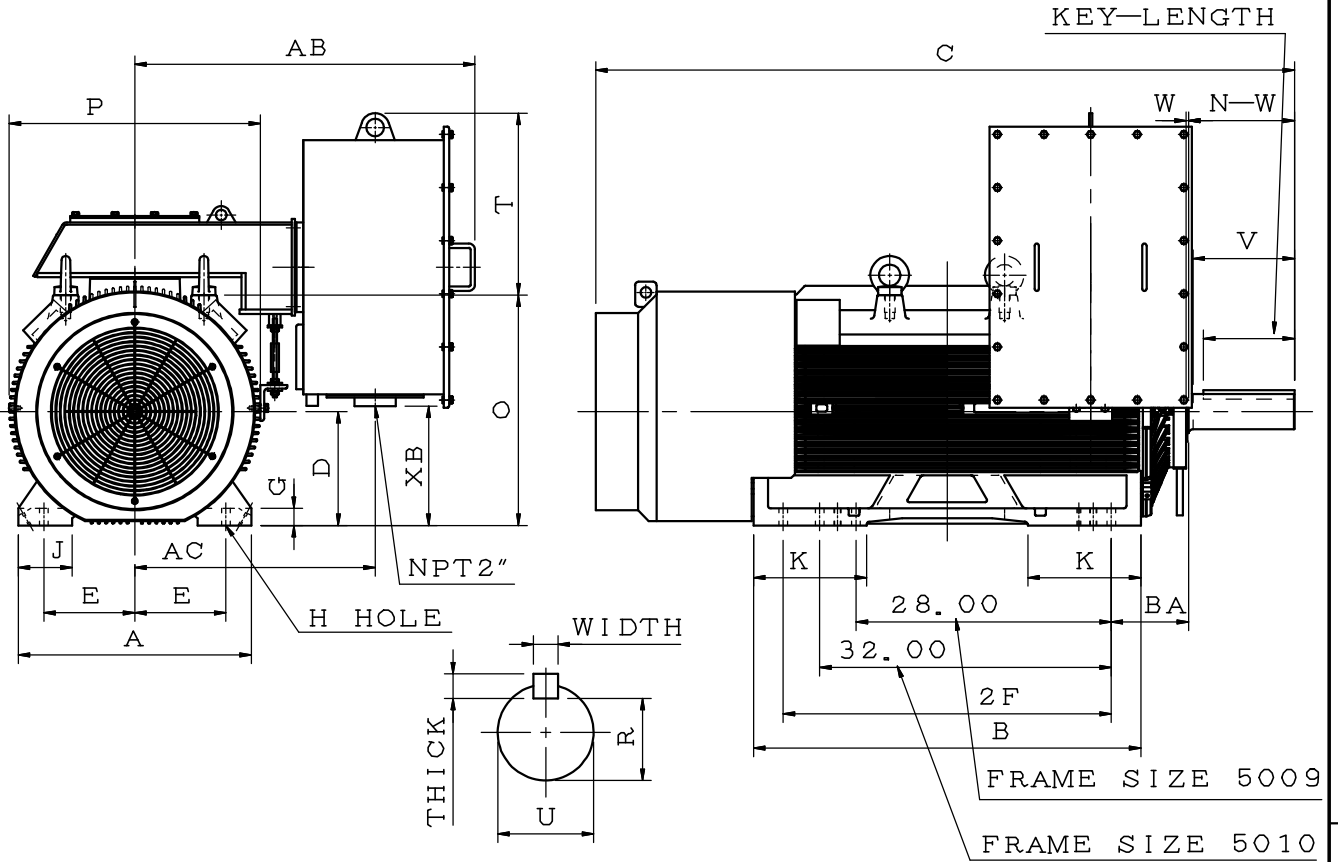
- NOTE: 1. DIMENSION D TOLERANCE: +0.00MM, -1.52MM
 2. DIMENSION U TOLERANCE: +0.000MM, -0.025MM
 3. DIMENSION R TOLERANCE: +0.000MM, -0.381MM
 4. DIMENSION V IS THE LENGTH OF STRAIGHT PART OF SHAFT
 5. FOR DIRECT FLEXIBLE COUPLING

OUTLINE DIMENSION SHEET

MODEL
AFHP
4P, 6P, 8P

3-PHASE PREMIUM EFFICIENCY INDUCTION MOTOR
FRAME SIZE (EG) 5011B

TOTALLY ENCLOSED FAN COOLED TYPE, SQUIRREL CAGE ROTOR



DIMENSIONS IN INCHES

FRAME SIZE (EG)	POLE	MOUNTING				A	B	C	D	G	J	K
		E	2F	H	BA							
5011B	4P~8P	10.00	36.00	0.94	8.50	25.60	42.52	76.70	12.50	1.85	5.90	12.40
FRAME SIZE (EG)	W	O	P	T	KEY			KEYSEAT	TERMINAL HOUSING			
					WIDTH	THICK	LENGTH	R	AB	AC	XB	
5011B	0.48	25.30	27.60	19.96	1.000	1.000	10.00	3.309	37.33	26.40	13.09	
FRAME SIZE (EG)	SHAFT EXTENSION			BEARINGS								
	N-W	U	V	DRIVE END	OPP. DRIVE END							
5011B	11.62	3.875	11.12	6324C3	6320C3							

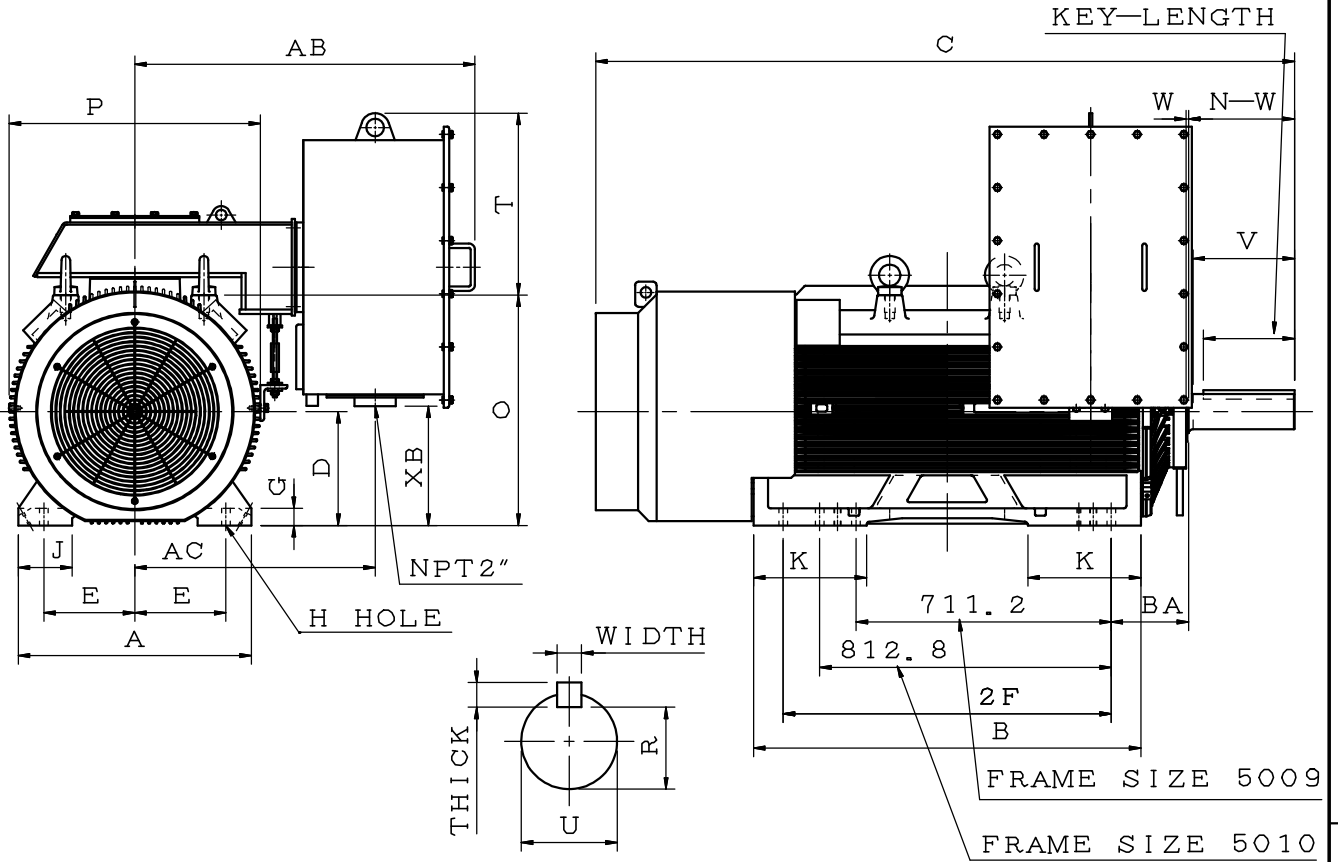
- NOTE: 1. DIMENSION D TOLERANCE: +0.00INCH, -0.06INCH
 2. DIMENSION U TOLERANCE: +0.000INCH, -0.001INCH
 3. DIMENSION R TOLERANCE: +0.000INCH, -0.015INCH
 4. DIMENSION V IS THE LENGTH OF STRAIGHT PART OF SHAFT
 5. FOR DIRECT FLEXIBLE COUPLING

OUTLINE DIMENSION SHEET

MODEL
AFHP
4P, 6P, 8P

3-PHASE PREMIUM EFFICIENCY INDUCTION MOTOR
FRAME SIZE (EG) 5011B

TOTALLY ENCLOSED FAN COOLED TYPE, SQUIRREL CAGE ROTOR



DIMENSIONS IN MM

FRAME SIZE (EG)	POLE	MOUNTING				A	B	C	D	G	J	K
		E	2F	H	BA							
5011B	4P~8P	254.0	914.4	24.0	215.9	650	1080	1948.25	317.5	47.5	150	315
FRAME SIZE (EG)	W	O	P	T	KEY			KEYSEAT	TERMINAL HOUSING			
					WIDTH	THICK	LENGTH	R	AB	AC	XB	
5011B	12.1	642.5	701	507	25.40	25.40	254	84.048	948.2	670	332.5	
FRAME SIZE (EG)	SHAFT EXTENSION			BEARINGS								
	N-W	U	V	DRIVE END	OPP. DRIVE END							
5011B	295.15	98.425	282.45	6324C3	6320C3							

- NOTE: 1. DIMENSION D TOLERANCE: +0.00MM, -1.52MM
 2. DIMENSION U TOLERANCE: +0.000MM, -0.025MM
 3. DIMENSION R TOLERANCE: +0.000MM, -0.381MM
 4. DIMENSION V IS THE LENGTH OF STRAIGHT PART OF SHAFT
 5. FOR DIRECT FLEXIBLE COUPLING

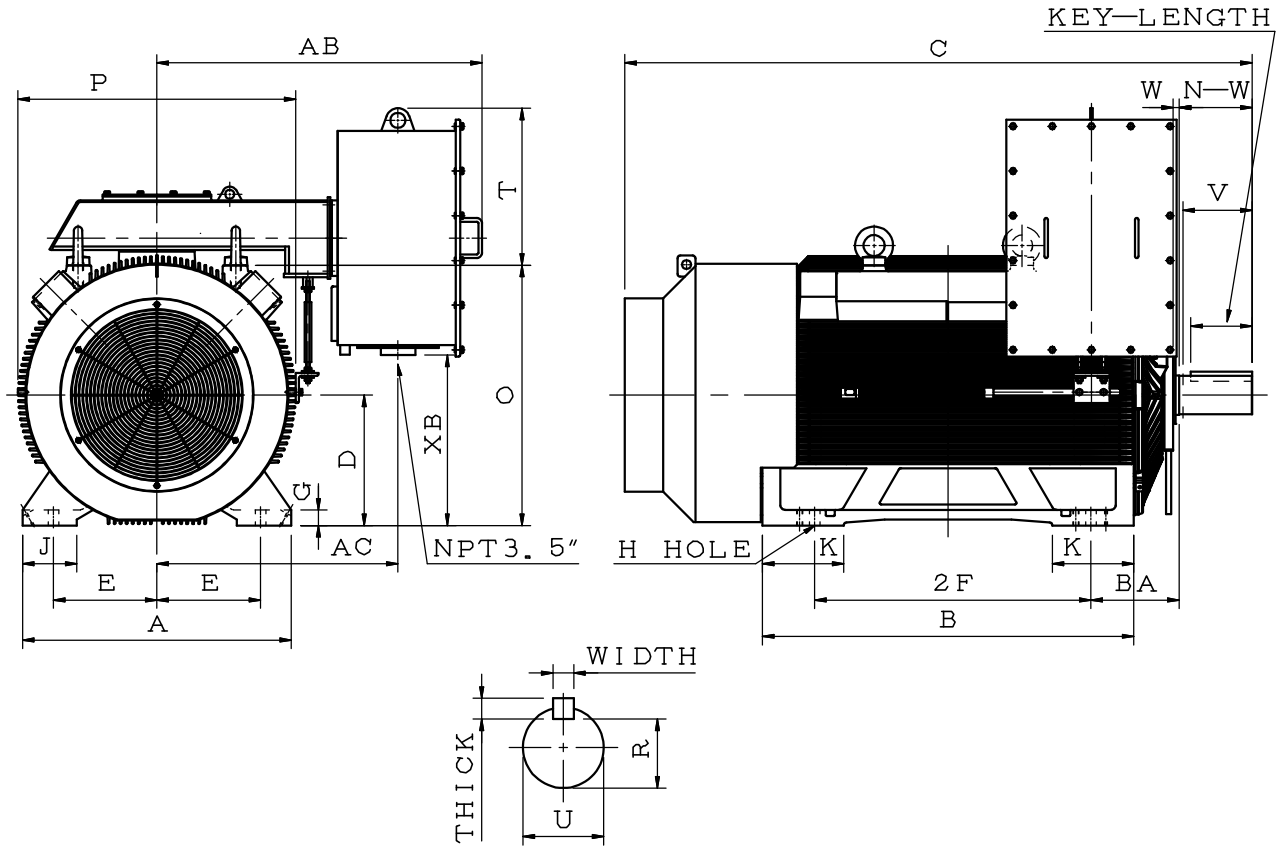
OUTLINE DIMENSION SHEET

MODEL
AFHP

3-PHASE PREMIUM EFFICIENCY INDUCTION MOTOR
FRAME SIZE (EG) 6808B

4P~8P

TOTALLY ENCLOSED FAN COOLED TYPE, SQUIRREL CAGE ROTOR



DIMENSIONS IN INCHES

FRAME SIZE (EG)	POLE	MOUNTING				A	B	C	D	G	J	K
		E	2F	H	BA							
6808B	4P~8P	13.50	36.00	1.38	11.50	35.00	48.45	81.74	17.00	2.00	7.10	10.63
FRAME SIZE (EG)	W	O	P	T	KEY			KEYSEAT	TERMINAL HOUSING			
					WIDTH	THICK	LENGTH	R	AB	AC	XB	
6808B	0.79	33.93	36.22	20.46	1.250	1.250	8.00	4.296	42.37	31.40	22.22	
FRAME SIZE (EG)	SHAFT EXTENSION			BEARINGS								
	N-W	U	V	DRIVE END	OPP. DRIVE END							
6808B	9.50	5.00	9.00	6326C3	6322C3							

- NOTE:
1. DIMENSION D TOLERANCE: +0.00 INCH, -0.06 INCH
 2. DIMENSION U TOLERANCE: +0.000 INCH, -0.001 INCH
 3. DIMENSION R TOLERANCE: +0.000 INCH, -0.015 INCH
 4. DIMENSION V IS THE LENGTH OF STRAIGHT PART OF SHAFT
 5. FOR DIRECT FLEXIBLE COUPLING

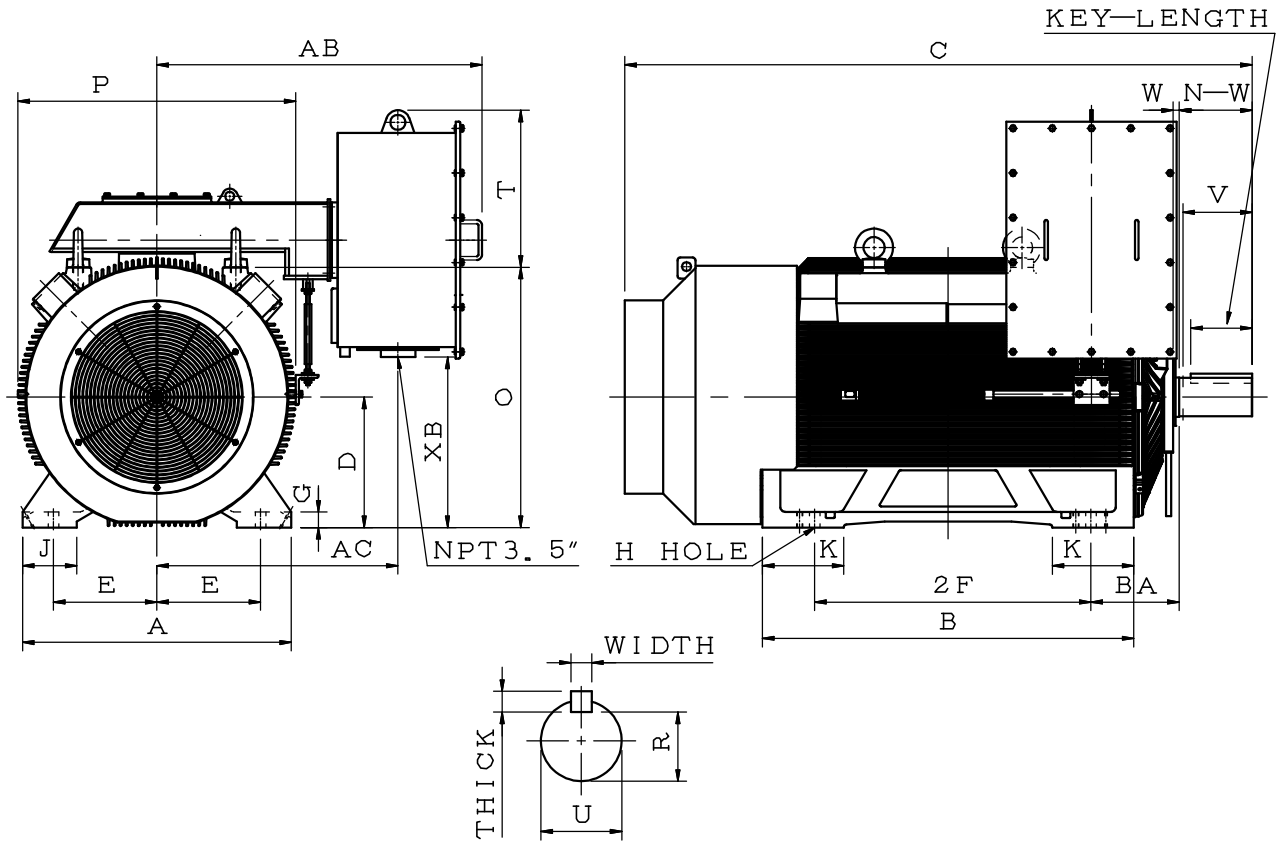
OUTLINE DIMENSION SHEET

MODEL
AFHP

3-PHASE PREMIUM EFFICIENCY INDUCTION MOTOR
FRAME SIZE (EG) 6808B

4P~8P

TOTALLY ENCLOSED FAN COOLED TYPE, SQUIRREL CAGE ROTOR



DIMENSIONS IN MM

FRAME SIZE (EG)	POLE	MOUNTING				A	B	C	D	G	J	K
		E	2F	H	BA							
6808B	4P~8P	342.9	914.4	35.00	292.1	890	1230	2076.3	431.8	51.8	180	270
FRAME SIZE (EG)	W	O	P	T	KEY			KEYSEAT	TERMINAL HOUSING			
					WIDTH	THICK	LENGTH	R	AB	AC	XB	
6808B	20.0	861.8	920	519.7	31.750	31.750	203.2	109.118	1076.2	798	564.5	
FRAME SIZE (EG)	SHAFT EXTENSION			BEARINGS								
	N-W	U	V	DRIVE END	OPP. DRIVE END							
6808B	241.30	127.00	228.60	6326C3	6322C3							

- NOTE: 1. DIMENSION D TOLERANCE: +0.00MM, -1.52MM
 2. DIMENSION U TOLERANCE: +0.000MM, -0.025MM
 3. DIMENSION R TOLERANCE: +0.000MM, -0.381MM
 4. DIMENSION V IS THE LENGTH OF STRAIGHT PART OF SHAFT
 5. FOR DIRECT FLEXIBLE COUPLING

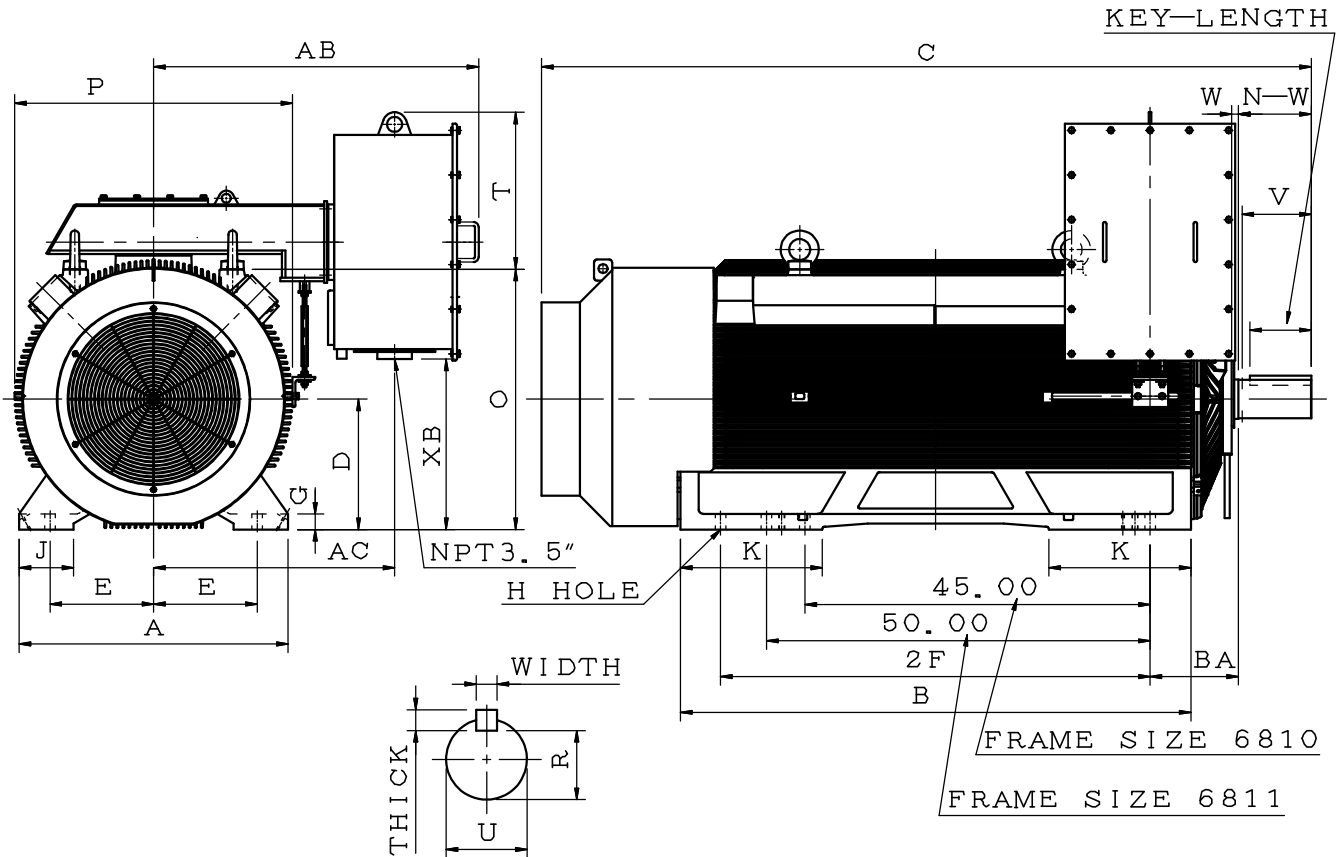
OUTLINE DIMENSION SHEET

MODEL
AFHP

3-PHASE PREMIUM EFFICIENCY INDUCTION MOTOR
FRAME SIZE (EG) 6812B

4P~8P

TOTALLY ENCLOSED FAN COOLED TYPE, SQUIRREL CAGE ROTOR



FRAME SIZE (EG)	POLE	MOUNTING				A	B	C	D	G	J	K
		E	2F	H	BA							
6812B	4P~8P	13.50	56.00	1.38	11.50	35.00	66.54	100.33	17.00	2.00	7.10	18.50
FRAME SIZE (EG)	W	O	P	T	KEY			KEYSEAT	TERMINAL HOUSING			
					WIDTH	THICK	LENGTH	R	AB	AC	XB	
6812B	0.87	33.93	36.22	20.46	1.250	1.250	8.00	4.296	42.37	31.40	22.22	
FRAME SIZE (EG)	SHAFT EXTENSION			BEARINGS								
	N-W	U	V	DRIVE END	OPP. DRIVE END							
6812B	9.50	5.00	9.00	6326C3	6322C3							

- NOTE: 1. DIMENSION D TOLERANCE: +0.00INCH, -0.06INCH
 2. DIMENSION U TOLERANCE: +0.000INCH, -0.001INCH
 3. DIMENSION R TOLERANCE: +0.000INCH, -0.015INCH
 4. DIMENSION V IS THE LENGTH OF STRAIGHT PART OF SHAFT
 5. FOR DIRECT FLEXIBLE COUPLING

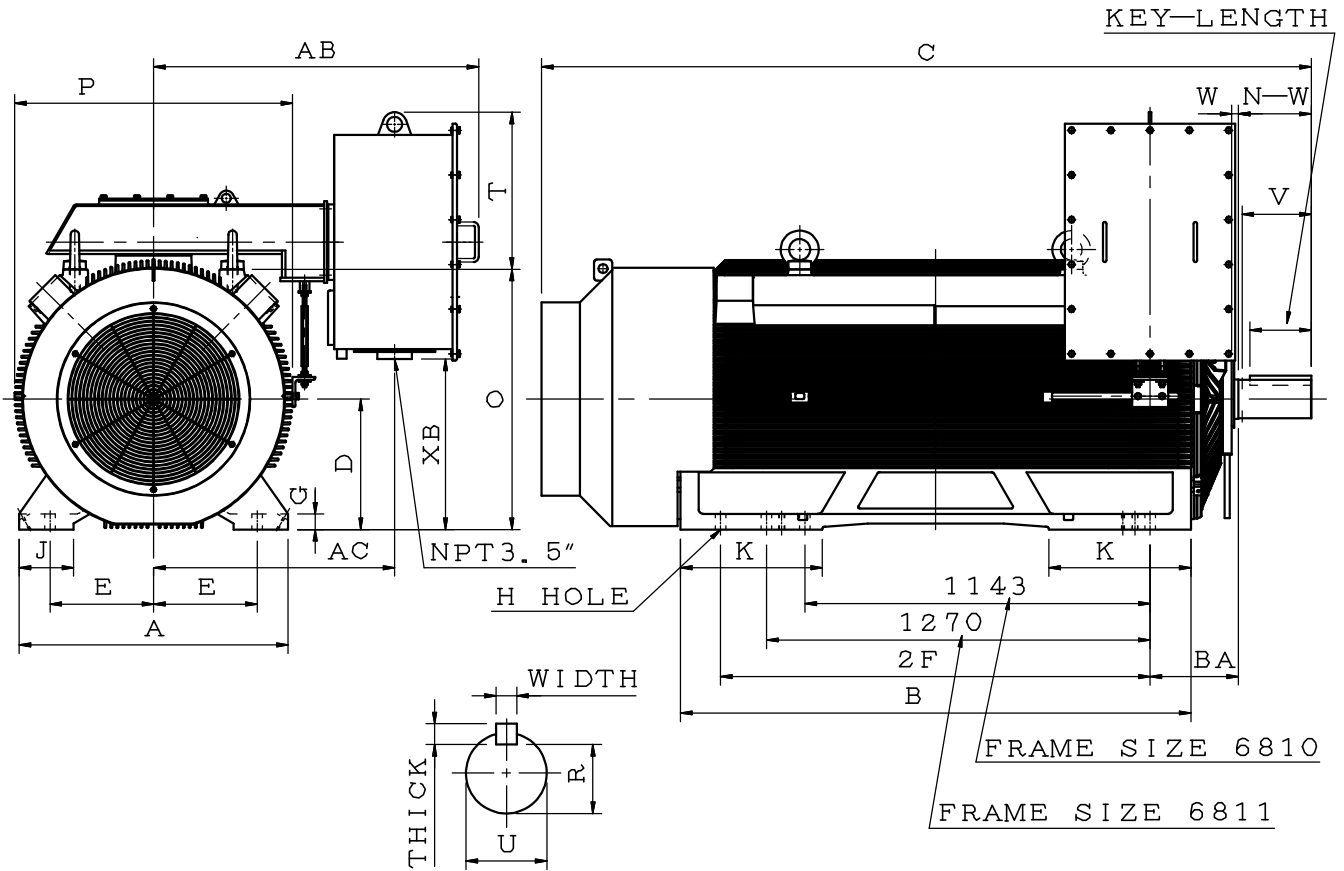
OUTLINE DIMENSION SHEET

MODEL
AFHP

3-PHASE PREMIUM EFFICIENCY INDUCTION MOTOR
FRAME SIZE (EG) 6812B

4P~8P

TOTALLY ENCLOSED FAN COOLED TYPE, SQUIRREL CAGE ROTOR



FRAME SIZE (EG)	POLE	MOUNTING				A	B	C	D	G	J	K
		E	2F	H	BA							
6812B	4P~8P	342.9	1422.4	35.00	292.1	890	1690	2548.4	431.8	51.8	180	470
FRAME SIZE (EG)	W	O	P	T	KEY			KEYSEAT	TERMINAL HOUSING			
					WIDTH	THICK	LENGTH	R	AB	AC	XB	
6812B	22.10	861.8	920	519.7	31.750	31.750	203.2	109.118	1076.2	798	564.5	
FRAME SIZE (EG)	SHAFT EXTENSION			BEARINGS								
	N-W	U	V	DRIVE END	OPP. DRIVE END							
6812B	241.30	127.00	228.60	6326C3	6322C3							

- NOTE: 1. DIMENSION D TOLERANCE: +0.00MM, -1.52MM
 2. DIMENSION U TOLERANCE: +0.000MM, -0.025MM
 3. DIMENSION R TOLERANCE: +0.000MM, -0.381MM
 4. DIMENSION V IS THE LENGTH OF STRAIGHT PART OF SHAFT
 5. FOR DIRECT FLEXIBLE COUPLING