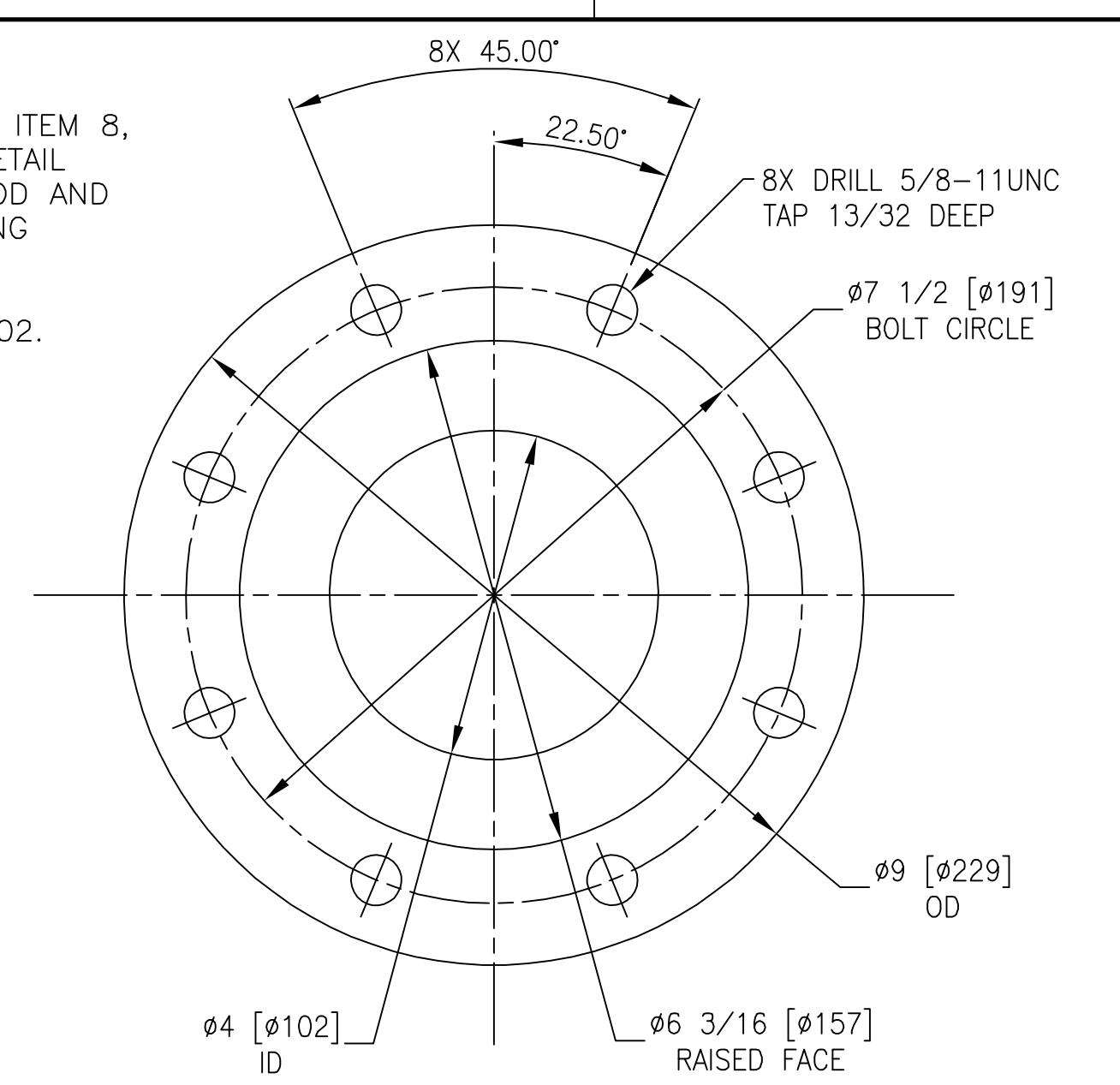
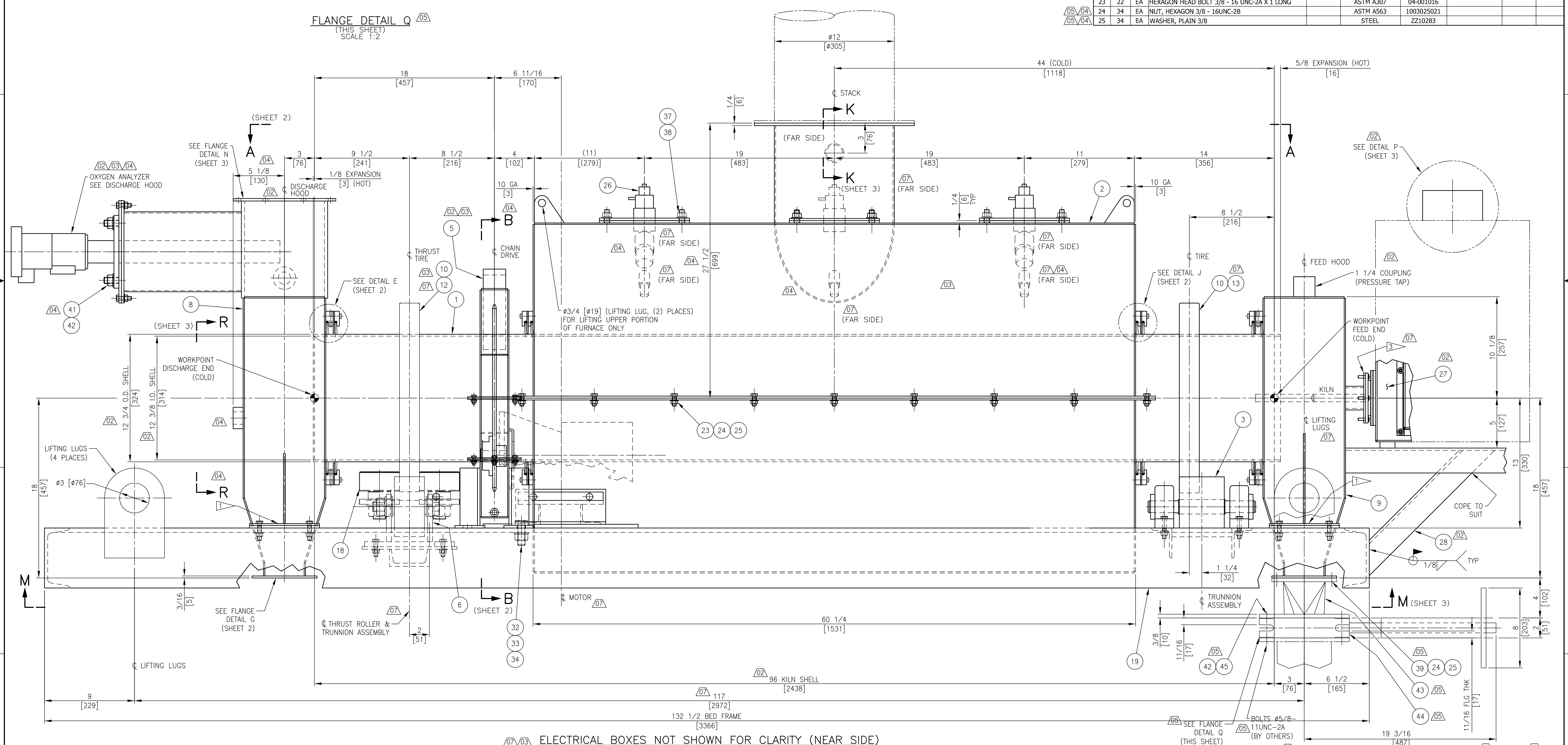


- NOTES:
- HARDWARE FOR MOUNTING OF DISCHARGE HOOD, ITEM 8, AND FEED HOOD, ITEM 9, ARE SUPPLIED ON DETAIL DRAWINGS. USE MOUNTING HOLES OF FEED HOOD AND DISCHARGE HOOD AS A TEMPLATE WHEN DRILLING HOLES AT ASSEMBLY.
 - ITEMS 29, 30 AND 31 NOT SHOWN, SEE UNIT 802.
 - USE HIGH TEMPERATURE SUITABLE FOR 550° F SERVICE BETWEEN HOOD AND FEEDER FLANGES.



ITEM	QTY	UNIT	DESCRIPTION	SIZE	MATERIAL SPEC	MATERIAL NUMBER	DRAWING NUMBER	UNIT WEIGHT	WEIGHT UNIT
26	3	EA	BURNER ASSEMBLY			ZX11398634			
27	1	EA	FEEDER			ZX11397975			
28	1	EA	ANGLE 2 1/2 X 2 1/2 X 1/4 X 17 3/4 LONG		ASTM A36				
29	1	EA	CONTROL PANEL (SEE UNIT 802)			ZX11385119			
30	1	EA	STARTER PANEL (SEE UNIT 802)			ZX11385141			
31	1	EA	DRY SEALED TRANSFORMER (SEE UNIT 802)			ZX11396931			
32	4	EA	HEXAGON HEAD BOLT 3/4 - 10 UNC-2A X 2 LONG		ASTM A307	04-001068			
33	4	EA	HEXAGON NUT 3/4 - 10 UNC-2B		ASTM A563	1003025051			
34	4	EA	WASHER 3/4		STEEL	00-651-001-412			
35	1	EA	REFRACTORY LINING FOR FURNACE			ZX11411467	10228532-DWK		
36	1	EA	CONNECTION DETAILS						
37	24	EA	HEXAGON NUT M12 - 1.75 UNC-2B		ISO 898-2	00921201012 S			
38	24	EA	WASHER M12		200 HV	MM0292418			
39	12	EA	HEXAGON HEAD BOLT 3/8 - 16 UNC-2A X 1 1/4 LONG		ASTM A307	04-001017			
40	4	EA	HEXAGON HEAD BOLT 1/4 - 20 UNC-2A X 1 LONG		ASTM A307	04-005350			
41	4	EA	NUT, HEXAGON 5/8 - 11UNC-2B		ASTM A563	1003025041	04-101755-01		
42	12	EA	WASHER 5/8		STEEL	MM0330206			
43	1	EA	SPOOL PIECE WELDMENT			ZX11417544	10230186-DWK		
44	1	EA	FABRI KNIFE-GATE VALVE			ZX11416319			
45	8	EA	BOLT, HEXAGON 5/8-11UNC-2A X 1 1/4 LG		ASTM A307	04-001044			

ITEM	QTY	UNIT	DESCRIPTION	SIZE	MATERIAL SPEC	MATERIAL NUMBER	DRAWING NUMBER	UNIT WEIGHT	WEIGHT UNIT
02	1	EA	KILN SHELL WELDMENT			ZX11391109	10227605-DWK		
03	2	EA	FURNACE DETAIL			ZX11391566	C.003405-002		
03	3	EA	UPHILL TRUNNION PAIR			ZX11391567	C.003405-003		
03	4	EA	DRIVEN SPROCKET			ZX11391568	C.003405-004		
03	5	EA	CHAIN GUARD ASSEMBLY			ZX11399668	10227494-DWK		
03	6	EA	DOWNHILL TRUNNION PAIR			ZX11391927	C.003405-006		
03	7	EA	KILN DRIVE ASSEMBLY AND DETAILS			ZX11391901	C.003405-007		
03	8	EA	DISCHARGE HOOD DETAIL			ZX11392136	C.003405-008		
03	9	EA	FEED HOOD			ZX11392140	C.003405-009		
03	10	EA	RIDING RING DETAIL			ZX11391680	10227710-DWK		
03	11	EA	MOTOR SLIDE BASE			ZX11391624	E9-897-688-501		
07	12	EA	TRUNNION/TIRE GUARD (DISCHARGE END)			ZX11391623	C.003405-010		
07	13	EA	TRUNNION/TIRE GUARD (FEED END)			ZX11391564	E9-897-712-501		
04	14	EA	BRUSH HOLDER DETAIL			ZX11392184	10225619-DWK		
04	15	EA	DEFLECTOR PLATE DETAIL			ZX11392210	10225639-DWK		
04	16	EA	BRUSH HOLDER DETAIL			ZX11392255	10225648-DWK		
04	17	EA	BRUSH SEAL - (3) 120 DEG SEGMENTS			ZX11392256			
04	18	EA	THRUST AND ROLLER MOUNT			ZX11391563	E9-897-634-501		
05	19	EA	BED FRAME WELDMENT			ZX11391873	10225474-DWK		
04	20	EA	HEXAGON HEAD BOLT 1/4 - 20 UNC-2A X 2 LONG		ASTM A307	04-009257			
04	21	EA	HEXAGON NUT 1/4 - 20 UNC-2B		ASTM A563	1003025011			
04	22	EA	WASHER 1/4		STEEL	04-001345			
04	23	EA	HEXAGON HEAD BOLT 3/8 - 16 UNC-2A X 1 LONG		ASTM A307	04-001016			
05	24	EA	NUT, HEXAGON 3/8 - 16UNC-2B		ASTM A563	1003025021			
05	25	EA	WASHER, PLAIN 3/8		STEEL	ZZ10283			



DIMENSION LENGTH ABOVE TO INCLUSIVE	0 TO 5	5 TO 30	30 TO 90	90 TO 230	230 & UP	HOLE TRUE POSIT. ±
MACHINE TOLERANCE ±	.005	.020	.050	.100	.130	.06
FABRICATION TOLERANCES	DECIMAL ±	.03	.06	.09	.15	.22
FRACTION ±	1/32	1/16	3/32	5/32	7/32	

REV	DESCRIPTION OF REVISION
07	UPDATED SHEETS 1, 2 AND 3 AS BUILT:
06	REVISED SHEETS 1, 2 AND 3. THIS SHEET: ITEM 44 MATERIAL NUMBER WAS ZX11418002.
05	REVISED SHEETS 1, 2, 3; SHEET 1, ADDED ITEMS 43, 44, 45 & FLG DET Q; ITEMS 24 & 25 QUANS WERE 30:
04	REVISED SHEETS 1, 2 AND 3. THIS SHEET: ADDED VIEW R-R, REVISED CONNECTION LOCATIONS ON FURNACE.

AWM	JMP	2015-05-29
JMB	JMB	2015-05-06
AWM	JMP	2015-05-01
JMB	JMP	2015-04-16
BY	APPD	DATE

metso Minerals Industries, Inc.
 Pyro Processing
 350 Railroad Street
 Danville, PA 17821 USA

DATE	DRN	PROJECT No.	EQUIPMENT No.
2015-01-23	PSR	C.003405	
2015-01-23	JMB	MATERIAL No.:	ZX11384198
2015-01-23	JMB	MATERIAL Spec.:	
2015-01-23	JMB	MATERIAL Wt.:	2,850
2015-01-23	JMB	SCALE:	1:4
2015-01-23	JMB	ANSI	For Construction
2015-01-23	JMB	DRAWING NO	10222221-DWK
2015-01-23	JMB	SHEET	1 OF 3
2015-01-23	JMB	REV	07